



**Albuquerque Bernalillo County Water
Utility Authority
Lift Stations #13 and #14 Emergency Engines
Authority-to-Construct Permit No. 1737
Modification Application**

February, 2024

Prepared for:

Albuquerque Bernalillo County Water Utility Authority
P.O. Box 568
Albuquerque, NM 87103



Prepared by:

Alliant Environmental, LLC
7804 Pan American Fwy. NE, Suite 5
Albuquerque, NM 87109



TABLE OF CONTENTS

1. Introduction 1-2
1.1 General Information..... 1-2

2. Process Descriptions & Process Flow Diagrams 2-1
2.1 Overview..... 2-1
2.2 Emergency Generator Engines 2-1

3. Project Discussion 3-1
3.1 Project Summary..... 3-1

4. Emission Estimates 4-2
4.1 Emergency Diesel Generator Engines 4-2

5. Air Quality Impacts Analysis 5-1

6. Regulatory Applicability 6-1
6.1 Compliance with AEHD AQP NMAC Rules and Regulations..... 6-1
6.2 New Source Performance Standards (NSPS) 6-4
6.3 National Emission Standards for Hazardous Air Pollutants (NESHAPs) 6-5
6.4 NESHAPs for Source Categories..... 6-5
6.5 Non-attainment Review 6-5
6.6 Prevention of Significant Deterioration (PSD)..... 6-5

7. PSD & NNSR 7-1
7.1 Non-Attainment New Source Review (NNSR)..... 7-1
7.2 Prevention of Signification Deterioration (PSD)..... 7-1

8. Permit Application Review Fee 8-1

APPENDICES

Appendix A Emission Calculations and Supporting Documentation
Appendix B Construction Permit Application Forms and Checklists
Appendix C Proof of Public Notice

LIST OF FIGURES

Figure 2-1. Area Map..... 2-2
Figure 2-2 & 2-3. Aerial Facility Plot Plans 2-3
Figures 2-4. Process Flow Diagram..... 2-5

1. Introduction

1.1 General Information

In accordance with New Mexico Administrative Code (NMAC) 20, Chapter 11, Part 41 of the Albuquerque Environmental Health Department (AEHD) Air Quality Program (AQP) Rules and Regulations, Albuquerque Bernalillo County Water Utility Authority (Water Authority) is applying for a New Source Review (NSR) construction permit modification to revise engine capacities on two diesel powered emergency generator engines at the Water Authority's Lift Station #13 and #14 located at the Double Eagle II Airport at 7401 Paseo del Volcan NW, Albuquerque, NM 87121. No physical changes to the two emergency engines are proposed, but in 2023 an AQP issued Post Inspection Notice (PIN) requires the Water Authority to revise the horse power (hp) for each emergency generator engine that was originally permitted in 2004.

This document includes all required information pertaining to the revision of the two emergency generator engine capacities. This submittal includes a completed Application Form for air pollutant sources in Bernalillo County, a process flow diagram, process description, area maps and plot plans, emissions calculation data, 20 NMAC Chapter 11, Part 41 General Application Requirements, permit application review fee assessment and all required forms and checklists.

Technical questions regarding the application may be referred to:

Ms. Kelli Berman, PE
P.O. Box 568
Albuquerque, NM 87103
(505) 803-4601
kberman@abcwua.org

Certification by the applicant's official representative that the information in this application is accurate is included with the Application Form included in Appendix B. The completed AEHD AQP permit application checklist is also located in Appendix B to ensure that the required items have been included in this application.

A check for the application fee for this permit modification application is attached to this permit modification application submittal package.

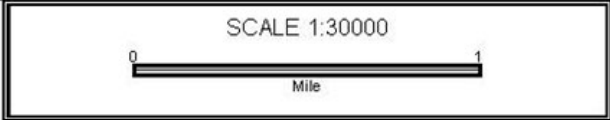
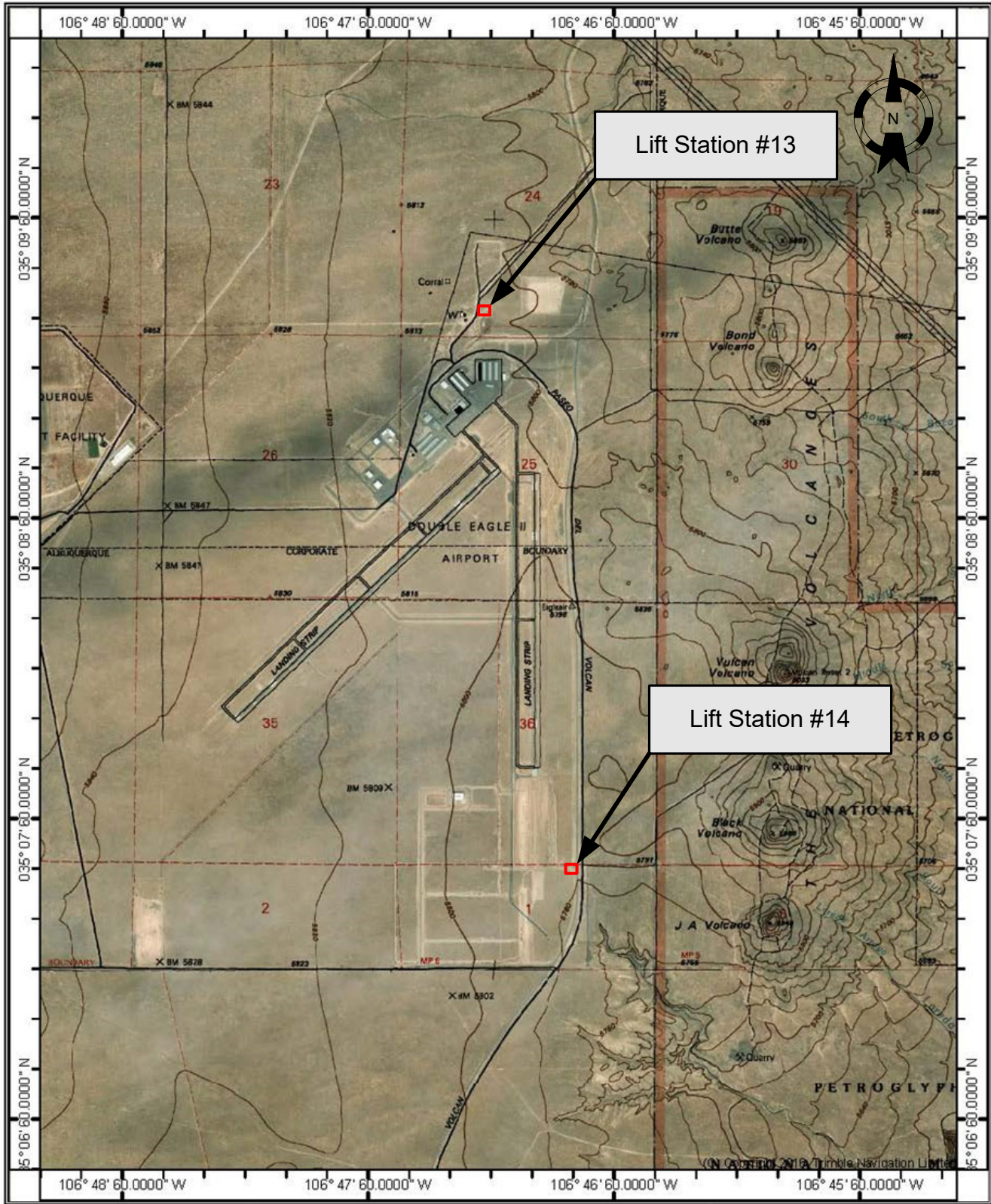
2. Process Descriptions & Process Flow Diagrams

2.1 Overview

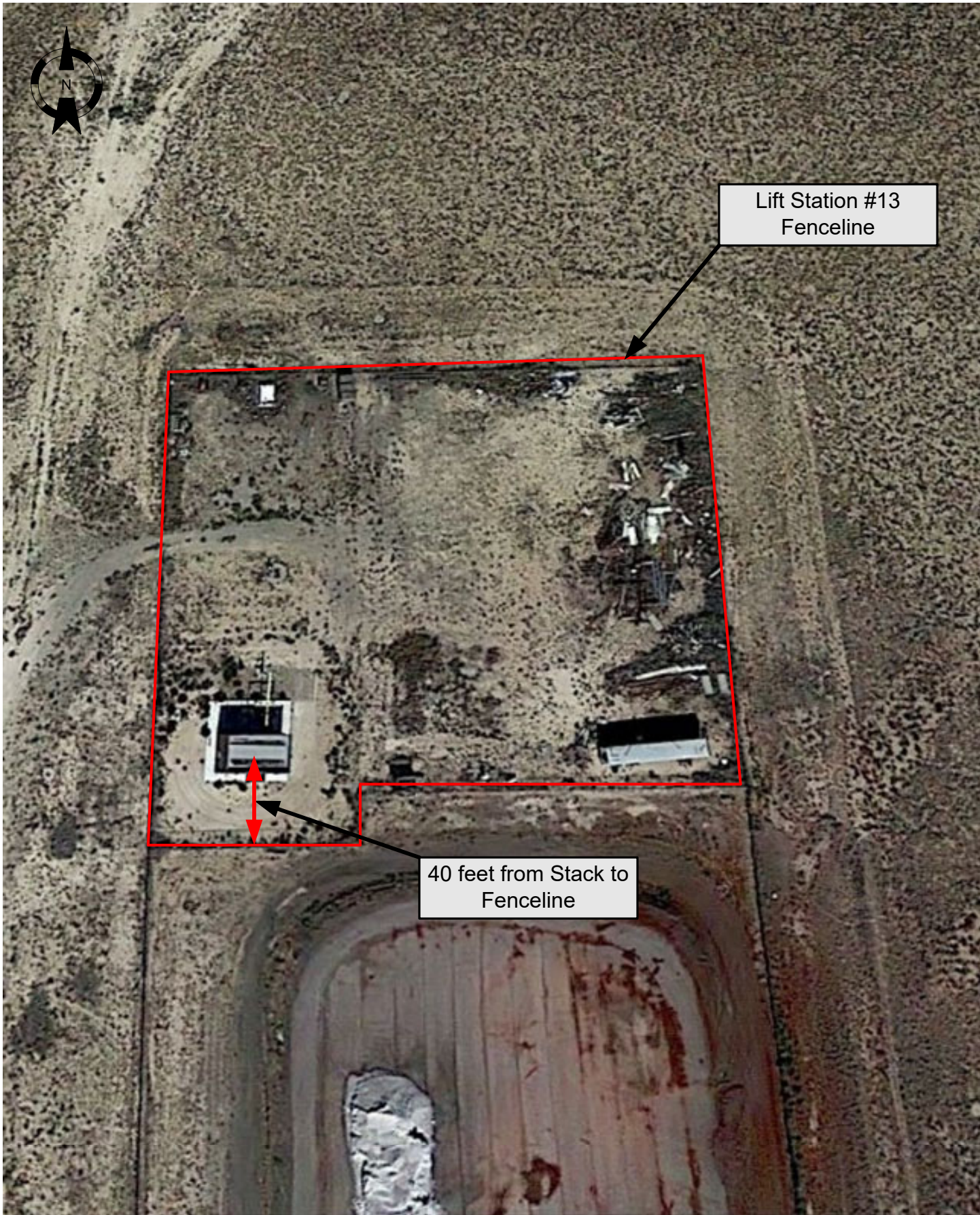
The Water Authority owns and operates Lift Station #13 and #14 at the Double Eagle II Airport. Wastewater lift stations are facilities designed to move wastewater from lower to higher elevation through pipes. Electric powered equipment at Lift Station #13 and #14 are powered by utility power. Each lift station includes a diesel powered emergency generator engine. These generator engines were permitted in 2004 for back-up power in the event of utility power loss. The initial permit application and the issued permit No. 1737, list these engines at 150 hp capacity. Proof of the 150 hp capacity for each engine could not be located and the closest value the vendor could provide was 166 hp. This permit modification application requests that the capacity for each emergency engine be permitted at 166 hp.

2.2 Emergency Generator Engines

Unit 1 – Lift Station #13 and Unit 2 – Lift Station #14 combustion emissions associated with the diesel-powered emergency generator engines include NO_x, CO, SO₂, VOCs, HAPs, and PM. The controlled emissions estimates presented in this permit modification application for the emergency engines are each based on 500 hours per year operation per emergency generator engine.



		Area Map		Albuquerque Bernalillo County Water Utility Authority	
Scale: 1:30,000	Drawn by: MDF	Date: 1/8/2024	LS #13	LS#14	Project No.:
	Chk'd by:	Date:	Latitude N 35° 9' 40.2"	35° 7' 50.0"	File Name: Permit 1737 Diagrams
			Longitude W 106° 47' 33.1"	106° 47' 9.6"	Figure: 2-1



Lift Station #13
Fenceline

40 feet from Stack to
Fenceline



Area Map

Albuquerque Bernalillo County Water
Utility Authority

Scale:	Drawn by: MDF	Date: 1/8/2024
	Chk'd by:	Date:

Lift Station #13
Latitude N 35° 9' 40.2"
Longitude W 106° 47' 33.1"

Project No.:	File Name: Permit 1737 Diagrams
--------------	------------------------------------

Figure: 2-2



Lift Station #14
Fenceline

15 feet from Stack to
Fenceline

Artrisco Vista Blvd.



Area Map

Albuquerque Bernalillo County Water
Utility Authority

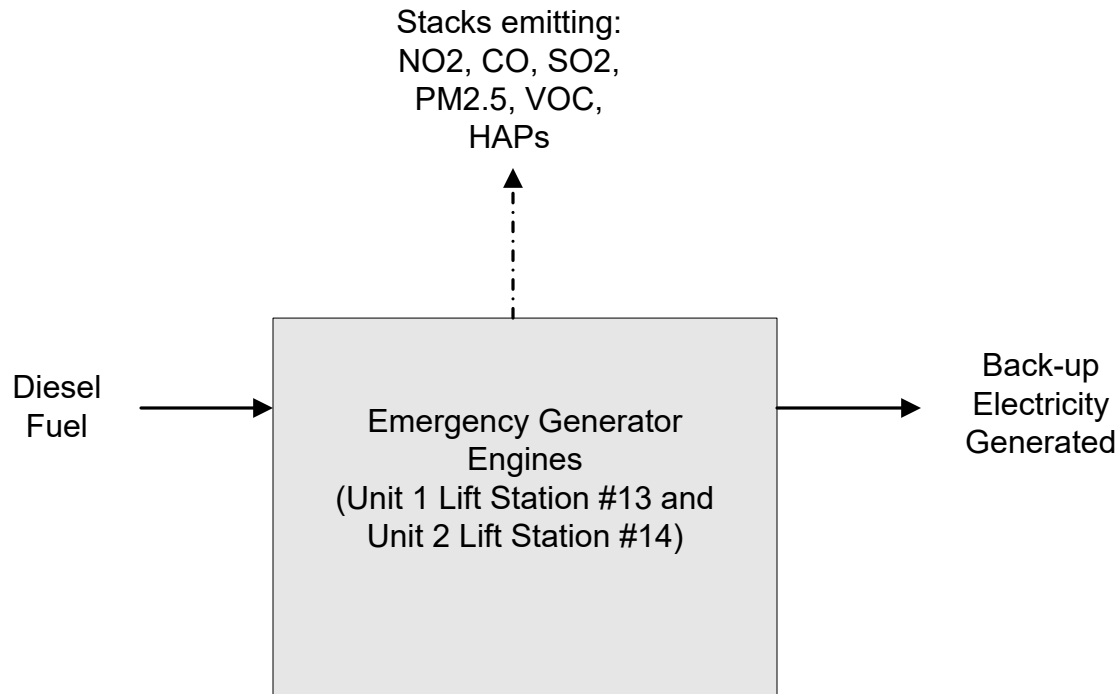
Scale:	Drawn by: MDF	Date: 1/8/2024
	Chk'd by:	Date:

Lift Station #14
Latitude N 35° 7' 50.0"
Longitude W 106° 47' 9.6"

Project No.:

File Name:
Permit 1737 Diagrams


Figure:
2-3



Key

↑ Flow Line

↑ Emission Point

 7804 Pan American Fwy., Suite 5 Albuquerque, NM 87109			Process Flow Diagram		
			ATC Permit 1737 Permit Revision Application Bernalillo County, NM		
Scale: Drawing Not to Scale Drawn by: MDF Date: 1/8/2024 Chk'd by: Date:			Albuquerque Bernalillo County Water Utility Authority		
			Project No.:	File Name: Permit 1737 Diagrams	Figure: 2-4

3. Project Discussion

3.1 Project Summary

This permit modification application proposes the following:

- Update both emergency engine capacities from 150 horsepower (hp) to 166 hp

4. Emission Estimates

This section describes the rationale and methodologies used to estimate emissions associated with this permitting action.

4.1 Emergency Diesel Generator Engines

Manufacturer data (capacities, hp) and AP-42 Chapter 3.3 for engines 600 hp or less emissions factors for NO_x, CO, VOC, SO₂, PM, and HAP was used to estimate emission from these emergency diesel generators.

Appendix A includes detailed emission calculations for the two emergency diesel generator engines.

5. Air Quality Impacts Analysis

Air dispersion modeling is not required for emergency engines.

6. Regulatory Applicability

6.1 Compliance with AEHD AQP NMAC Rules and Regulations

20.11.1 NMAC – General Provisions

20.11.1 NMAC adopts non-enforceable air quality goals for ambient air quality as well as the enforceable National Ambient Air Quality Standards (NAAQS) and New Mexico Ambient Air Quality Standards (NMAAQS). The NMAAQS, 20.2.3 NMAC, specify maximum allowable ambient concentrations of the criteria pollutants NO₂, CO SO₂, particulate matter (TSP, PM₁₀, and PM_{2.5}), total reduced sulfur, and H₂S.

Air dispersion modeling is not required for emergency engines.

20.11.2 NMAC – Permit Fees

The Water Authority will pay the required fees on an annual basis, as required.

20.11.5 NMAC – Visible Air Contaminants

This regulation limits visible emissions from stationary sources. The Water Authority will meet the requirements of this rule.

20.11.8 NMAC – Ambient Air Quality Standards

The Federal and State ambient air quality standards are met for the emergency generator engines.

20.11.20 NMAC – Fugitive Dust Control

This regulation requires the use of reasonable precautions to prevent particulate matter that is generated from becoming airborne. Emissions of particulate matter from Lift Station #13 and #14 are predominantly from the combustion of diesel fuel during test run times or during an emergency use of the engines.

20.11.41 NMAC – Construction Permit

The Albuquerque – Bernalillo County Air Quality Control Board Construction Permit regulation, 20.11.41 NMAC applies to every person who intends to construct, operate, modify, relocate or make a technical revision to a source that is subject to 20.11.41 NMAC or who has authority to operate a source that triggers the emission thresholds in Subsection B of 20.11.41.2 NMAC, except as otherwise provided. This includes construction permit requirements for any stationary source, new or modified, that has a pre-controlled emission rate exceeding 10 pounds per hour or 25 tons per year of any regulated air contaminant for which there are national or New Mexico Ambient Air Quality Standards (AAQS). The regulation also requires that any source exceeding either of these thresholds obtain a permit prior to commencing construction. This regulation ensures that a facility will not cause or contribute to air pollution in violation of any AAQS. The objective of this regulation is to establish the requirements for obtaining a construction permit, construction permit modification, relocation and administrative and technical permit revision. This permit modification application is being submitted to request a modification to existing Authority-to-Construct Permit No. 1737 to reflect the modifications listed in Section 3.

20.11.41.13.E(1) NMAC – Application for Permit - Content

This permit modification application includes a completed permit application form provided by the Air Quality Program (AQP) (see Appendix B).

20.11.41.13.E(2) NMAC – Application for Permit - Content

The name and post address of the applicant is provided on page 1-1, on the application form in Appendix B of this application, and on the public notice documents.

20.11.41.13.E(3) NMAC – Application for Permit - Content

The date this application was submitted to the AQP is provided on title page of this application and the signature page on the application form in Appendix B.

20.11.41.13.E(4) NMAC – Application for Permit - Content

This application text and Appendices A through C include attachments, including emission calculations, computations, and all other analyses used to provide information to describe the potential emission rate and nature of all regulated air contaminants that the existing and proposed operations emit, and the emissions that the source will emit under routine operations. Emissions associated with malfunction, startup and shutdown, if any, are discussed below under 20.11.41.13.E(5). AERMOD air dispersion modeling is not required for emergency engines.

20.11.41.13.E(5) NMAC – Application for Permit - Content

The following are the minimum elements that shall be included in the permit application before the department can determine whether the application is administratively complete and ready for technical review. It is not necessary to include an element if the department has issued a written waiver regarding the element and the waiver accompanies the application. However, the department shall not waive any federal requirements. The permit application shall include:

(5) an operational and maintenance strategy detailing:

(a) The steps the applicant will take if a malfunction occurs that may cause emission of a regulated air contaminant to exceed a limit that is included in the permit:

Emissions during malfunction, startup, and shutdown of process equipment are not expected to differ from regular operations. Should a malfunction of an emergency generator engine occur, the operation of the equipment will be shutdown immediately.

Any emissions during malfunction, startup, and shutdown will be minimized through the application of industry standard and/or manufacturer recommended operating and maintenance practices.

(b) Emissions of particulate matter as seen through opacity are higher during startup and possibly during shutdown due to low engine temperature leading to incomplete combustion during the internal combustion cycle. These emergency generator engines are not equipped with air pollution control equipment. Operation and

maintenance of these emergency generator engines will be performed in accordance with the manufacturer’s requirements including monthly exercise and regular maintenance to reduce emissions during startup and shutdown.

- (c) The steps the applicant will take to minimize emissions during routine startup or shutdown

Any emissions during malfunction, startup, and shutdown will be minimized through the application of industry standard and/or manufacturer recommended operating and maintenance practices of the emergency engines.

20.11.41.13.E(6) NMAC – Application for Permit - Content

A USGS aerial topo map downloaded from “Terrain Navigator Pro” is included on page 2-2 of this application.

20.11.41.13.E(7) NMAC – Application for Permit - Content

Aerial plot plans and a process flow diagrams of the facility showing the proposed operations are provided on pages 2-3 through 2-5 of this application.

20.11.41.13.E(8) NMAC – Application for Permit - Content

A complete description of the facility, process and emission sources is discussed on previous pages of this application. A process flow diagrams is provided on page 2-5 of this application.

20.11.41.13.E(9) NMAC – Application for Permit - Content

Emission Source UTM Coordinates:

Unit #	Source Description	UTM E (m)	UTM N (m)
1	Lift Station #13 Emergency Diesel Generator Engine	336740	3892388
2	Lift Station #14 Emergency Diesel Generator Engine	337271	3888982

Controls:

Annual emissions are controlled by limiting the annual operating hours for each of the two emergency engines to 500 hours per year.

20.11.41.13.E(10) NMAC – Application for Permit - Content

The Water Authority will continue to keep records of emergency generator run time hours, as applicable, for the facility. Any engine maintenance (oil changes, etc.) will be documented and records kept on file.

20.11.41.13.E(11) NMAC – Application for Permit - Content

The maximum and normal operating schedule of the lift stations is seven (7) days per week and 24 hours per day. The emergency engines are tested weekly or monthly.

20.11.41.13.E(12) NMAC – Application for Permit - Content

No other relevant information should be applicable; however, if the Air Quality Program requires further information on anything applicable to this permit application, the Water Utility Authority will provide such information as available.

20.11.41.13.E(13) NMAC – Application for Permit - Content

The signed signature page certifying to the accuracy of all information as represented in this application and attachments is located in Appendix B.

20.11.41.13.E(14) NMAC – Application for Permit - Content

A review fee check is being submitted to the AQP with this application.

20.11.41.13.E(15) NMAC – Application for Permit - Content

All public notice requirements have been fulfilled and proof is provided in Appendix C of this application.

20.11.42 NMAC – Operating Permits

The emergency engines permitted under Authority-to-Construct Permit No. 1737 are included under Title V Operating Permit number 1418-M2.

20.11.47 NMAC – Emission Inventory Requirements

The Water Authority is currently in compliance with this rule and will continue to meet the requirements under this part.

20.11.49 NMAC – Excess Emissions

The Water Authority will report any excess emissions as specified under 20.11.49 NMAC.

20.11.63 – New Source Performance Standards

This regulation incorporates the Federal New Source Performance Standards (NSPS) regulations under 40 CFR Part 60. The Water Authority will continue to comply with applicable requirements under this part.

20.11.64 – Emission Standards for Hazardous Air Pollutants

This regulation incorporates the Federal National Emission Standards for Hazardous Air Pollutants (NESHAP) regulations under 40 CFR Part 61 and Part 63. The Water Authority will continue to comply with applicable requirements under these parts.

20.11.65 – Volatile Organic Compounds

This regulation pertains to sources of hydrocarbon vapors from facilities and sources not otherwise regulated or exempted by 40 CFR Part 60. This regulation does not apply to the emergency engines.

6.2 New Source Performance Standards (NSPS)

40 CFR Part 60, Subpart III – Standards of Performance for Stationary Compression Ignition Internal Combustion Engines

This regulation applies to owners or operators of stationary CI ICE that commence construction, modification or reconstruction after July 11, 2005. Units 1 and 2 are emergency diesel generator engines that were construction prior to July 11, 2005; therefore, Subpart IIII is not applicable.

6.3 National Emission Standards for Hazardous Air Pollutants (NESHAPs)

National Emission Standards for Hazardous Air Pollutants (NESHAPs) are emissions standards for hazardous air pollutants (HAPs) primarily applicable to major sources of HAPs. NESHAP emission limits are established on the basis of a maximum achievable control technology (MACT) determination for the source. A major source of HAPs is defined as having potential emissions in excess of 25 tons per year (tpy) for total HAPs and/or potential emissions in excess of 10 tpy for any individual HAP. The emergency engines permitted under Authority-to-Construct Permit 1737 are a minor source for Hazardous Air Pollutants; therefore, 40 CFR Part 61 NESHAPS are not applicable to this facility.

6.4 NESHAPs for Source Categories

40 CFR Part 63, Subpart ZZZZ – NESHAP for Stationary Reciprocating Internal Combustion Engines (RICE)

This regulation applies to owners and operators of stationary Reciprocating Internal Combustion Engines (RICE) located at major and minor (area) sources of HAP emissions. The Water Authority will continue to meet the applicable requirements of Subpart ZZZZ for the emergency generator engines.

6.5 Non-attainment Review

Not Applicable. See Section 7.1

6.6 Prevention of Significant Deterioration (PSD)

Not Applicable. See Section 7.2

7. PSD & NNSR

7.1 Non-Attainment New Source Review (NNSR)

Lift Station #13 and #14 is located in Bernalillo County which has been designated as attainment for all National Ambient Air Quality Standards (NAAQS). As such, NNSR regulatory requirements are not applicable.

7.2 Prevention of Signification Deterioration (PSD)

Lift Station #13 and #14 is not one of the 28 named sources in 20.11.61.26 NMAC, Table 1 and it is not considered an existing PSD major source. PSD is not applicable.

8. Permit Application Review Fee

This permit modification application is being submitted to authorize the revisions listed in Section 3 to Air Quality Construction Permit No. 1737. The application review fee table is included in this application and the fee check is being submitted with this application package.

APPENDIX A

Emission Calculations and Supporting Documentation

Uncontrolled Emissions Summary

Unit No.	Description	NO _x		CO		VOC		SO ₂		PM _{2.5}		Formaldehyde (HAP)		Total HAPs	
		(lb/hr)	(tpy)	(lb/hr)	(tpy)	(lb/hr)	(tpy)	(lb/hr)	(tpy)	(lb/hr)	(tpy)	(lb/hr)	(tpy)	(lb/hr)	(tpy)
1	Olympian 1006-GT	5.15	22.54	1.11	4.86	0.41	1.80	0.34	1.49	0.37	1.60	0.003	0.01	0.01	0.04
2	Olympian 1006-GT	5.15	22.54	1.11	4.86	0.41	1.80	0.34	1.49	0.37	1.60	0.003	0.01	0.01	0.04
Total Project Emissions		10.29	45.08	2.22	9.71	0.82	3.59	0.68	2.98	0.73	3.20	0.01	0.02	0.02	0.08

Controlled Emissions Summary (Based on 500 hours per year run time)

Unit No.	Description	NO _x		CO		VOC		SO ₂		PM _{2.5}		Formaldehyde (HAP)		Total HAPs	
		(lb/hr)	(tpy)	(lb/hr)	(tpy)	(lb/hr)	(tpy)	(lb/hr)	(tpy)	(lb/hr)	(tpy)	(lb/hr)	(tpy)	(lb/hr)	(tpy)
1	Olympian 1006-GT	5.15	1.287	1.11	0.277	0.41	0.103	0.34	0.085	0.365	0.09	0.003	0.003	0.01	0.01
2	Olympian 1006-GT	5.15	1.287	1.11	0.277	0.41	0.103	0.34	0.085	0.365	0.09	0.003	0.003	0.01	0.01
Total Project Emissions		10.29	2.57	2.22	0.55	0.82	0.21	0.68	0.17	0.73	0.18	0.01	0.01	0.02	0.02

Olympian Emergency Diesel Generator Engine Emission Calculations

Unit No. 1 Liftstation #13
 Unit No. 2 Liftstation #14
 Source Description: Emergency Diesel Generator Engines
 Engine Manufacturer: Perkins
 Generator Manufacturer: Olympian by Caterpillar
 Model: 1006-GT (D100P1S information used as provided by vendor)
 Olympian Product Identification Numbers:
 Lift Station #13 OLY00000KNPS01462
 Lift Station #14 OLY00000PNPS01458
 Generator SN: 158328/21 (Lift Station #13)
 Generator SN: 158328/01 (Lift Station #14)
 Manufacture Date: 04/2004
 Elevation (ft): 5976

Specifications

RPM 1800 rpm
 Horsepower (hp) 166 hp Standby
 Kilo Watt (kW) 124 kW Standby
 Fuel consumption 17 gal/hr (estimated)
 Fuel Density: 7 lb/gal Ultra Low Sulfur Fuel
 Fuel Heat Value: 19300 Btu/lb
 Fuel Heat Value: 0.14 MMBtu/gal
 Heat Input: 2.30 MMBtu/hr
 BSFC 13838 Btu/hp-hr

Uncontrolled Emission Calculations

NO _x	CO	VOC	SO ₂	PM ₁₀ ¹	PM _{2.5} ²	CO ₂	Units	Comments
0.031	0.00668	0.00247	0.00205	0.002	0.002	1.15	lb/hp-hr	AP-42 Table 3.3-1
5.15	1.11	0.41	0.34	0.37	0.37	191	lb/hr	Calculated hourly emission rate
22.54	4.86	1.80	1.49	1.60	1.60	836	tpy	Annual emission rate (hrs/yr) = 8760

Controlled Emission Calculations

1.29	0.28	0.10	0.09	0.09	0.09	47.73	tpy	Annual emission rate (hrs/yr) = 500
-------------	-------------	-------------	-------------	-------------	-------------	--------------	-----	--

Sample Calculations:

lb/hr NO_x = (0.031 lb/hp-hr) x 166 hp = 5.15 lb/hr NO_x
 tpy NO_x = (5.15 lb/hr) x (8760 hrs/yr) / (2000 lb/ton)
 Controlled tpy NO_x = (5.15 lb/hr) x (500 hrs/yr) / 2000 lb/ton

HAP Emission Calculations

Hazardous Air Pollutants (HAP)	Emission Factor	lb/hr	Uncontrolled 8760 hours tpy	Controlled 500 hours tpy
Acetaldehyde	7.67E-04 lbs/MMBtu	0.002	0.008	0.002
Acrolein	9.25E-05 lbs/MMBtu	0.0002	0.001	0.0002
Benzene	9.33E-04 lbs/MMBtu	0.002	0.009	0.002
1,3-Butadiene	3.91E-05 lbs/MMBtu	0.0001	0.0004	0.0001
Formaldehyde	1.18E-03 lbs/MMBtu	0.003	0.012	0.003
Toluene	4.09E-04 lbs/MMBtu	0.001	0.004	0.001
Naphthalene	8.48E-05 lbs/MMBtu	0.0002	0.001	0.0002
Xylenes	2.85E-04 lbs/MMBtu	0.0007	0.003	0.001
HAP TOTALS		0.01	0.04	0.01

NOTES:

Emission Factors from EPA AP-42, Table 3.3-2 Specified Organic Compound Emission Factors for Uncontrolled Diesel Engines (October, 1996) for HAPs.

Sample Calculations:

lb/hr formaldehyde = (1.18E-03 lbs/MMBtu) x (2.3 MMBtu/hr heat input) = 0.003 lb/hr formaldehyde
 tpy formaldehyde = (0.003 lb/hr formaldehyde) x (8760 hrs/yr) / (2000lb/ton) = 0.012 tpy formaldehyde
 Controlled tpy formaldehyde = (0.003 lb/hr formaldehyde) x (500 hrs/yr) / (2000lb/ton) = 0.003 tpy formaldehyde

Larson, Gregory S.

From: Scott A. Phillips <Phillips_Scott@wagnerequipment.com>
Sent: Thursday, August 3, 2023 2:57 PM
To: Albert T. Hutcherson; Larson, Gregory S.
Subject: RE: [EXTERNAL]Re: [EXTERNAL]Olympian Perkins Gensets by DEII

[CAUTION: This email was received from an EXTERNAL source]

Looking at the engine tag called out as 1006-6T and tie in with the model call out in the Cat system D100P1S, this engine is 166 horsepower. The suffix on Olympians was for different control options and not power rating. Hope that helps.

..... Turbochargers
D100P2 — 1006-6T
Max Power at Rated rpm — hp (kW)
Standby..... **166 (124)**
Prime..... **151 (112)**
RMEP — psi (kPa)

Scott A. Phillips
Wagner Power Systems
Technical Services
505-938-2809

From: Scott A. Phillips
Sent: Thursday, August 3, 2023 8:13 AM
To: Albert T. Hutcherson <Hutcherson_Albert@wagnerequipment.com>; Larson, Gregory S. <glarson@abcwua.org>
Subject: RE: [EXTERNAL]Re: [EXTERNAL]Olympian Perkins Gensets by DEII

Good Morning,
Apologize for the delay, there is not a very good data base in the Cat system for the Perkins branded engines and the only information I can find is that both generator sets were D100P1S models. I am not sure why the original submittal shows D90P1 but it is likely the D100P1 was more readily available. Since these were manufactured in the UK it is possible that they would send a D100P1 because it was in US inventory?

NPS01458 PIPs/PSPs Product Configuration Product Coverage OPT/ESC Customer Name and Address			
Arrangement No:	205-6273	Build Date:	23Apr21
Mfg Model:	D100P1S	Factory Ship Date:	Not App
Mktg Model Year:	2004	Dealer/Invoiced Ship Date:	01Jun21
Prod Family:	OG Olympian Gensets	Sales Date:	31Aug21
Sims Prod Family:	61 Generator Set Engines	Delivery Date:	None
Source Facility:	DK Caterpillar (NI) Limited	Selling Dir:	E255
Principle Work:	C77 Public/Civil Services	Owner Cls:	A

NPS01462 PIPs/PSPs Product Configuration Product Coverage OPT/ESC Customer Name and Address

Arrangement No: 205-6273	Build Date: 30Apr20
Mfg Model: D100P1S	Factory Ship Date: Not Appl
Mktg Model Year: 2004	Dealer/Invoiced Ship Date: 01Jun20
Prod Family: OG Olympian Gensets	Sales Date: 31Aug20
Sims Prod Family: 61 Generator Set Engines	Delivery Date: 28Jan20
Source Facility: DK Caterpillar (Ni) Limited	Selling Dlr: <u>E255</u>
Principle Work: C77 Public/Civil Services	Owner Cls: A

Scott A. Phillips
Wagner Power Systems
Technical Services
505-938-2809

Table 3.3-1. EMISSION FACTORS FOR UNCONTROLLED GASOLINE AND DIESEL INDUSTRIAL ENGINES^a

Pollutant	Gasoline Fuel (SCC 2-02-003-01, 2-03-003-01)		Diesel Fuel (SCC 2-02-001-02, 2-03-001-01)		EMISSION FACTOR RATING
	Emission Factor (lb/hp-hr) (power output)	Emission Factor (lb/MMBtu) (fuel input)	Emission Factor (lb/hp-hr) (power output)	Emission Factor (lb/MMBtu) (fuel input)	
NO _x	0.011	1.63	0.031	4.41	D
CO	6.96 E-03 ^d	0.99 ^d	6.68 E-03	0.95	D
SO _x	5.91 E-04	0.084	2.05 E-03	0.29	D
PM-10 ^b	7.21 E-04	0.10	2.20 E-03	0.31	D
CO ₂ ^c	1.08	154	1.15	164	B
Aldehydes	4.85 E-04	0.07	4.63 E-04	0.07	D
TOC					
Exhaust	0.015	2.10	2.47 E-03	0.35	D
Evaporative	6.61 E-04	0.09	0.00	0.00	E
Crankcase	4.85 E-03	0.69	4.41 E-05	0.01	E
Refueling	1.08 E-03	0.15	0.00	0.00	E

^a References 2,5-6,9-14. When necessary, an average brake-specific fuel consumption (BSFC) of 7,000 Btu/hp-hr was used to convert from lb/MMBtu to lb/hp-hr. To convert from lb/hp-hr to kg/kw-hr, multiply by 0.608. To convert from lb/MMBtu to ng/J, multiply by 430. SCC = Source Classification Code. TOC = total organic compounds.


^b PM-10 = particulate matter less than or equal to 10 µm aerodynamic diameter. All particulate is assumed to be ≤ 1 µm in size.

^c Assumes 99% conversion of carbon in fuel to CO₂ with 87 weight % carbon in diesel, 86 weight % carbon in gasoline, average BSFC of 7,000 Btu/hp-hr, diesel heating value of 19,300 Btu/lb, and gasoline heating value of 20,300 Btu/lb.

^d Instead of 0.439 lb/hp-hr (power output) and 62.7 lb/mmBtu (fuel input), the correct emissions factors values are 6.96 E-03 lb/hp-hr (power output) and 0.99 lb/mmBtu (fuel input), respectively. This is an editorial correction. March 24, 2009

Table 3.3-2. SPECIATED ORGANIC COMPOUND EMISSION FACTORS FOR UNCONTROLLED DIESEL ENGINES^a

EMISSION FACTOR RATING: E

Pollutant	Emission Factor (Fuel Input) (lb/MMBtu)
Benzene ^b	9.33 E-04
Toluene ^b	4.09 E-04
Xylenes ^b	2.85 E-04
Propylene 	2.58 E-03
1,3-Butadiene ^{b,c}	<3.91 E-05
Formaldehyde ^b	1.18 E-03
Acetaldehyde ^b	7.67 E-04
Acrolein ^b	<9.25 E-05
Polycyclic aromatic hydrocarbons (PAH)	
Naphthalene ^b	8.48 E-05
Acenaphthylene	<5.06 E-06
Acenaphthene	<1.42 E-06
Fluorene	2.92 E-05
Phenanthrene	2.94 E-05
Anthracene	1.87 E-06
Fluoranthene	7.61 E-06
Pyrene	4.78 E-06
Benzo(a)anthracene	1.68 E-06
Chrysene	3.53 E-07
Benzo(b)fluoranthene	<9.91 E-08
Benzo(k)fluoranthene	<1.55 E-07
Benzo(a)pyrene	<1.88 E-07
Indeno(1,2,3-cd)pyrene	<3.75 E-07
Dibenz(a,h)anthracene	<5.83 E-07
Benzo(g,h,l)perylene	<4.89 E-07
TOTAL PAH	1.68 E-04

^a Based on the uncontrolled levels of 2 diesel engines from References 6-7. Source Classification Codes 2-02-001-02, 2-03-001-01. To convert from lb/MMBtu to ng/J, multiply by 430.

^b Hazardous air pollutant listed in the *Clean Air Act*.

^c Based on data from 1 engine.

Table 3.3-3. EFFECT OF VARIOUS EMISSION CONTROL TECHNOLOGIES ON DIESEL ENGINES^a

Technology	Affected Parameter	
	Increase	Decrease
Fuel modifications		
Sulfur content increase	PM, wear	
Aromatic content increase	PM, NO _x	
Cetane number		PM, NO _x
10% and 90% boiling point		PM
Fuel additives		PM, NO _x
Water/Fuel emulsions		NO _x
Engine modifications		
Injection timing retard	PM, BSFC	NO _x , power
Fuel injection pressure	PM, NO _x	
Injection rate control		NO _x , PM
Rapid spill nozzles		PM
Electronic timing & metering		NO _x , PM
Injector nozzle geometry		PM
Combustion chamber modifications		NO _x , PM
Turbocharging	PM, power	NO _x
Charge cooling		NO _x
Exhaust gas recirculation	PM, power, wear	NO _x
Oil consumption control		PM, wear
Exhaust after-treatment		
Particulate traps		PM
Selective catalytic reduction		NO _x
Oxidation catalysts		TOC, CO, PM

^a Reference 8. PM = particulate matter. BSFC = brake-specific fuel consumption.

Lift Station 13 Genset



LS 13 Generator Nameplate



LS 13 Engine Nameplate 1 of 2



LS 13 Engine Nameplate 2 of 2

Lift Station 14 Genset



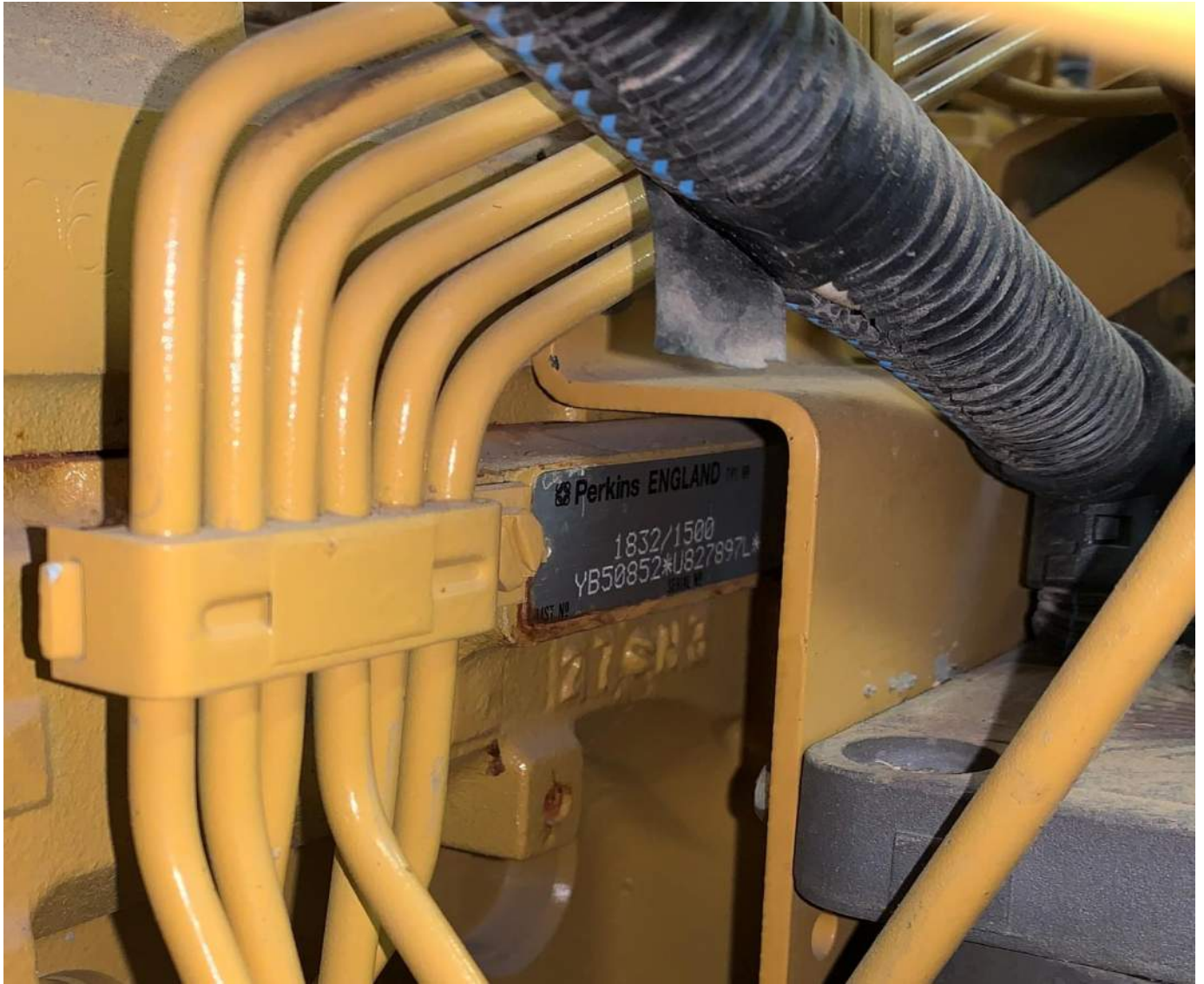
LS 14 Genset



LS 14 Generator Nameplate



LS 14 Engine Nameplate (1 of 2)



LS 14 Engine Nameplate (2 of 2)

APPENDIX B

Permit Application Forms and Checklists



City of Albuquerque Environmental Health Department Air Quality Program



Air Quality Compliance History Disclosure Form

The Albuquerque-Bernalillo County Joint Air Quality Program (“Program”) administers and enforces local air quality laws for the City of Albuquerque (“City”) and Bernalillo County (“County”) on behalf of the City Environmental Health Department, including the New Mexico Air Quality Control Act (“AQCA”), NMSA 1978, Sections 74-2-1 to -17. In accordance with Sections 74-2-7(P) and (S) of the AQCA, the Program may deny any permit application or revoke any permit issued pursuant to the AQCA if, within ten years immediately preceding the date of submission of the permit application, the applicant or permittee meets any one of the criteria outlined in the AQCA. The Program requires applicants to file this Compliance History Disclosure Form in order for the Program to deem an air permit application administratively complete, or issue an air permit for those permits without an initial administrative completeness determination process. Additionally, an existing permit holder (permits issued prior to the Effective Date of this Form) shall provide this Compliance History Disclosure Form to the Program upon the Program’s request. Note: Program Staff can answer basic questions about this Compliance History Disclosure Form but cannot provide specific guidance or legal advice.

Instructions


1. Applications filed pursuant to the following regulations shall include this Compliance History Disclosure Form, in accordance with Section 74-2-7(S) of the AQCA: *Construction Permits* (20.11.41 NMAC); *Operating Permits* (20.11.42 NMAC); *Nonattainment Areas* (20.11.60 NMAC); *Prevention of Significant Deterioration* (20.11.61 NMAC); *Acid Rain* (20.11.62 NMAC); and *Fugitive Dust* (20.11.20 NMAC) except this Form shall not be required for asbestos notifications under 20.11.20.22 NMAC.
2. The permittee identified on this Compliance History Disclosure Form shall match the permittee in the existing permit or new application. If the information in an existing permit needs to be changed, please contact the Program about revisions and ownership transfers.
3. Answer every question completely and truthfully, and do not leave any blank spaces. If there is nothing to disclose in answer to a particular question, check the box labeled “No.” Failure to provide any of the information requested in this Compliance History Disclosure Form may constitute grounds for an incompleteness determination, application denial, or permit revocation.
4. Be especially careful not to leave out information in a way that might create an impression that you are trying to hide it. Omitting information, even unintentionally, may result in application denial or permit revocation.
5. If necessary, continue answers on a separate page and identify the question. If you submit any document in connection with your answer to any question, refer to it as, “Exhibit No. __”, and attach it at the end of the Compliance History Disclosure Form, consecutively numbering each additional page at the top right corner.
6. The Program may require additional information to make a thorough review of an application. At all times before the Program has made a final decision regarding the application, an applicant has a duty to promptly supplement and correct information the applicant has submitted in an application to the Program. The applicant’s duty to supplement and correct the application includes, but is not limited to, relevant information acquired after the applicant has submitted the application and additional information the applicant otherwise determines is relevant to the application and the Program’s review and decision. While the Program is processing an application, regardless of whether the Program has determined the application is administratively complete, if the Program determines that additional information is necessary to evaluate or make a final decision regarding the application, the Program may request additional information and the applicant shall provide the requested additional information.
7. Supplementary information required by the Program may include responses to public comment received by the Program during the application review process.
8. Any fees submitted for processing an application that has been denied will not be refunded. If the Program denies an application, a person may submit a new application and the fee required for a new application. The applicant has the burden of demonstrating that a permit should be issued.

COMPLIANCE HISTORY		
A. Applicant/Permittee Name: Albuquerque Bernalillo County Water Utility Authority		Check Applicable Box: <input checked="" type="checkbox"/> Applicant <input checked="" type="checkbox"/> Permittee
B. Time Period of Compliance Reporting (10 Years): <u>1/1/2014</u> to <u>1/29/2024</u> Instructions: For applicants, answer the following questions with information from within the 10 years preceding the current application. For existing permit holders, answer the following questions with information from within the 10 years preceding the Program's issuance of the permit.		
C. Questions		
1	Knowingly misrepresented a material fact in an application for a permit?	<input type="checkbox"/> Yes <input checked="" type="checkbox"/> No
2	Refused to disclose information required by the provisions of the New Mexico Air Quality Control Act?	<input type="checkbox"/> Yes <input checked="" type="checkbox"/> No
3	Been convicted in any court of any state or the United States of a felony related to environmental crime?	<input type="checkbox"/> Yes <input checked="" type="checkbox"/> No
4	Been convicted in any court of any state or the United States of a crime defined by state or federal statute as involving or being in restraint of trade, price fixing, bribery, or fraud?	<input type="checkbox"/> Yes <input checked="" type="checkbox"/> No
5a	Constructed or operated any facility for which a permit was sought, including the current application, without the required air quality permit(s) under 20.11.41 NMAC, 20.11.42 NMAC, 20.11.60 NMAC, 20.11.61 NMAC, or 20.11.62 NMAC?	<input type="checkbox"/> Yes <input checked="" type="checkbox"/> No
5b	If "No" to question 5a, go to question 6. If "Yes" to question 5a, state whether each facility that was constructed or operated without the required air quality permit met at least one of the following exceptions: i. The unpermitted facility was discovered after acquisition during a timely environmental audit that was authorized by the Program or the New Mexico Environment Department; or ii. The operator of the facility, using good engineering practices and established approved calculation methodologies, estimated that the facility's emissions would not require an air permit, and the operator applied for an air permit within 30 calendar days of discovering that an air permit was required for the facility.	<input type="checkbox"/> Yes <input type="checkbox"/> No
6	Had any permit revoked or permanently suspended for cause under the environmental laws of any state or the United States?	<input type="checkbox"/> Yes <input checked="" type="checkbox"/> No
7	For each "yes" answer, please attach an explanation and supporting documentation.	

I, the undersigned, hereby certify under penalty of law that this Compliance History Disclosure Form (Form) and all attachments were prepared under my direction or supervision in accordance with a system designed to assure that qualified personnel properly gather and evaluate the information submitted. I have knowledge of the information in this Form and it is, to the best of my knowledge and belief, true, accurate, and complete. I understand that there are significant penalties for submitting false information, including denial of the application or revocation of a permit, as well as fines and imprisonment for knowing violations. If I filed an application, I covenant and agree to promptly supplement and correct information in this Form until the Program makes a final decision regarding the application. Further, I certify that I am qualified and authorized to file this Form, to certify to the truth and accuracy of the information herein, and bind the permittee and source.

Signed on 1/31/24

Mark S. Sanchez
Print Name


Signature

Executive Director
Print Title

Albuquerque Bernalillo County Water Utility Authority
Company Name



**City of Albuquerque
Environmental Health Department
Air Quality Program**



Pre-Permit Application Meeting Request Form

Please complete appropriate boxes and email to aqd@cabq.gov or mail to:

Environmental Health Department
Air Quality Program
Permitting Division
P.O. Box 1293
Albuquerque, NM 87103

A copy of this form must be included as part of the application package.

Company/Organization:	Albuquerque Bernalillo County Water Utility Authority
Current Permit #:	1737
Point of Contact: (phone number and email): Preferred form of contact (check one): <input type="checkbox"/> Phone <input type="checkbox"/> E-mail	Name: Kelli Berman, P.E. Phone: (505) 803-4601 Email: kberman@abcwua.org
Preferred meeting date/times:	December 1, 2023 from 09:30AM to 10:30AM
Preferred meeting type (Zoom/In Person):	Zoom meeting
Description of Project:	The Air Quality Program issued a Post Inspection Notification (PIN) to the Albuquerque Bernalillo County Water Utility Authority (WUA) after a routine inspection of the WUA's two emergency generators located at the Double Eagle II Airport Lift Stations. The permitted rates for the two emergency diesel powered generators permitted in Authority-to-Construct Permit No. 1737 (August 13, 2004) show each engine's horse power (hp) rating at 150 hp. The engines' name plates do not show the capacities and the WUA was not able to provide specification sheets for the engines showing their rated hp. After contacting the vendor of the two engines, the closest documentation available showed a rated capacity of 166 hp. This permit revision application will conservatively permit the engines at 166 hp. Emissions estimates will be calculated using US EPA's AP-42 Chapter 3 document for Stationary Internal Combustion Engines.



City of Albuquerque Environmental Health Department Air Quality Program



Construction Permit (20.11.41 NMAC) Pre-Permit Application Meeting Agenda Checklist & Public Notice Sign Guidelines Checklist

This entire document, including both completed checklists, must be included as part of the application package.

Any person seeking a new permit, a permit modification, or an emergency permit under 20.11.41 NMAC (Construction Permits) shall do so by filing a written application with the Albuquerque-Bernalillo County Joint Air Quality Program, which administers and enforces local air quality laws for the City of Albuquerque (“City”) and Bernalillo County (“County”), on behalf of the City Environmental Health Department (“Department”).

Prior to submitting an application, per 20.11.41.13(A) NMAC, the applicant (or their consultant) shall contact the Department in writing and submit a Pre-Permit Application Meeting Request Form to request a pre-application meeting. The Pre-Permit Application Meeting Request Form is available at <https://www.cabq.gov/airquality/air-quality-permits/air-quality-application-forms>. The purpose of the pre-application meeting is for the Department to provide the applicant with information regarding the contents of the application and the application process.

This pre-application meeting agenda checklist is provided to aid the Department and applicant in ensuring that in the pre-permit application meeting all information regarding the contents of the application and the application process are communicated to the applicant. This is because applications that are ruled incomplete because of missing information will delay any determination or the issuance of the permit. The Department reserves the right to request additional relevant information prior to ruling the application complete in accordance with 20.11.41 NMAC.

Also included in this document is the Public Notice Sign Guidelines Checklist, which contains requirements for how the applicant must display the required weather-proof sign.

The applicant should fill out and have this agenda checklist available at the pre-application meeting to be sure all items are covered. Check the boxes to acknowledge that each item from the agenda was discussed and that requirements for the weather-proof sign were followed.

Pre-Permit Application Meeting Agenda Checklist

Applicant Company Name: **Albuquerque Bernalillo County Water Utility Authority**

Facility Name: **Double Eagle II Airport Lift Stations**

- Fill out and submit a Pre-Permit Application Meeting Request form
Available online at <https://www.cabq.gov/airquality/air-quality-permits/air-quality-application-forms/air-quality-application-forms>
- I. Discuss Project:
- a. Facility Location
 - b. Facility Description
 - c. Main Processes
 - d. Equipment
 - e. Proposed Schedule
- II. Discuss the requirement for a zoning certification or verifications for new permits and permit modifications. The Zoning Requirement Cover Page form is a required component of this part of the submittal:
- a. For projects on property subject to City or County zoning laws (*i.e.*, **not** located on federal land, **not** located on State of New Mexico land, **not** located on Tribal land), a zoning certification from the appropriate planning department is required.
 - i. City Planning Form: <https://www.cabq.gov/planning/code-enforcement-zoning>
 - ii. County Planning Form: <https://www.bernco.gov/planning/planning-and-land-use/applications-forms/>
 - b. If the project's property is not subject to City or County zoning jurisdiction, a zoning verification from both planning departments is required.
 - i. City Planning Form: <https://www.cabq.gov/planning/code-enforcement-zoning>
 - ii. County Planning Form: <https://www.bernco.gov/planning/planning-and-land-use/applications-forms/>
 - c. The zoning certification or verifications **must** be obtained from the appropriate Planning Department, either City of Albuquerque or Bernalillo County. For more information, please visit the City's Planning Department website at <https://www.cabq.gov/planning> or Bernalillo County's Planning Department website at the <https://www.bernco.gov/planning/>.
- III. Discuss the requirement for a Compliance History Disclosure Form as of Nov. 6, 2023 for permit application submittals except for Administrative Revisions that are not transfers of ownership.
- IV. If permit modification or revision, review current permit:
- a. Review Process Equipment Table and Emissions Table and discuss changes
 - b. Request information about the replacement or new equipment (for example, if it is an engine, we need to know if it is new, what year, fuel type, etc...) to give them an idea of the changes that will be needed
 - c. Discuss possible changes in permit conditions
- V. Air Dispersion modeling process, procedures and options:
- a. When modeling is required and possibility of waivers
 - b. Protocol process, purpose, and time frame
 - c. Preliminary review, purpose, and time frame
 - d. Full review and time frame
 - e. Peer reviews
 - f. Assumptions in the modeling become permit conditions
 - g. NED data should be used instead of DEM data for assigning elevations to receptors, sources, buildings, etc.

- VI. Applicant's public notice requirements
- a. During the same month application package will be submitted, ask Department for memo of neighborhood associations/coalitions within ½ mile of facility
 - b. Fill out and send Notice of Intent to Construct form as attachment, with Applicant Notice Cover Letter as email body, to neighborhood associations/coalitions listed in memo:
<https://www.cabq.gov/airquality/air-quality-permits/air-quality-application-forms>
 - c. Post and maintain a weather-proof sign. Signs are available in the downtown Program office. The Public Notice Sign Guidelines Checklist can be found on the next page of this document.
- VII. Regulatory timelines
- a. 30 days to rule application complete
 - b. 90 days after ruled complete for permitting decision
 - c. 30-day public comment period after application deemed complete
 - d. If public interest in application:
 - i. 30-day review of technical analysis
 - ii. 90-day extension for permitting decision
 - e. Request for Public Information Hearing - 90-day extension for permitting decision
 - f. Complex technical issues in application - 90-day extension for permitting decision
 - g. If application ruled incomplete it stops timeline and restarts at beginning with updated submittal
- VIII. Department Policies
- a. One original hard copy must be submitted along with a duplicate copy. The duplicate copy should be a high-quality electronic duplicate submitted on thumb drive as one complete PDF with all application contents found in the hardcopy, including pages with signatures. However, do not include financial information, such as a copy of a check, in the electronic PDF. The electronic submittal should also include emission calculations Excel-compatible file(s) and modeling files, if applicable.
 - b. Applications will be ruled incomplete if any parts from Permit Application Checklist are missing
 - c. Review fees paid in full are part of the application package (Except as noted above)
 - d. Discuss payment format (by check, credit card or online)
 - e. Use the most recent Permit Application Checklist, found under Part 41 Implementation on this page:
<https://www.cabq.gov/airquality/air-quality-permits/air-quality-application-forms>
 - f. After three tries, permit application denied and application must start over including repayment of fees
- IX. Additional Questions?
None



City of Albuquerque Environmental Health Department Air Quality Program



Public Notice Sign Guidelines

Any person seeking a permit under 20.11.41 NMAC, Construction Permits, shall do so by filing a written application with the Department. *Prior to submitting an application, the applicant shall post and maintain a weather-proof sign provided by the department. The applicant shall keep the sign posted until the department takes final action on the permit application; if an applicant can establish to the department's satisfaction that the applicant is prohibited by law from posting, at either location required, the department may waive the posting requirement and may impose different notification requirements. A copy of this form must be submitted with your application.*

Applications that are ruled incomplete because of missing information will delay any determination or the issuance of the permit. The Department reserves the right to request additional relevant information prior to ruling the application complete in accordance with 20.11.41 NMAC.

Applicant Company Name: **Albuquerque Bernalillo County Water Utility Authority**

Facility Name: **Double Eagle II Airport Lift Stations**

- The sign must be posted at the more visible of either the proposed or existing facility entrance (or, if approved in advance and in writing by the department, at another location on the property that is accessible to the public)
 - The sign shall be installed and maintained in a condition such that members of the public can easily view, access, and read the sign at all times.
 - The lower edge of the sign board should be mounted a minimum of 2 feet above the existing ground surface to facilitate ease of viewing
- Include at least two pictures of the completed, properly posted sign in the application package immediately following this document. One picture should show the location of the posted sign and the other should be close enough to the sign for the posted information to be legible in the picture.
- Check here if the department has waived the sign posting requirement.**
Alternative public notice details:

On-site Public Notice



Lift Station No. 13



Lift Station No. 14



City of Albuquerque Environmental Health Department Air Quality Program



Construction Permit (20.11.41 NMAC) Application Checklist

This checklist must be returned with the application

Any person seeking a new air quality permit, a permit modification, or an emergency permit under 20.11.41 NMAC (Construction Permits) shall do so by filing a written application with the Albuquerque-Bernalillo County Joint Air Quality Program, which administers and enforces local air quality laws for the City of Albuquerque (“City”) and Bernalillo County (“County”), on behalf of the City Environmental Health Department (“Department”).

The Department will rule an application administratively incomplete if it is missing or has incorrect information. The Department may require additional information that is necessary to make a thorough review of an application, including but not limited to technical clarifications, emission calculations, emission factor usage, additional application review fees if any are required by 20.11.2 NMAC, and new or additional air dispersion modeling.

If the Department has ruled an application administratively incomplete three (3) times, the Department will deny the permit application. Any fees submitted for processing an application that has been denied will not be refunded. If the Department denies an application, a person may submit a new application and the fee required for a new application. The applicant has the burden of demonstrating that a permit should be issued.

The following are the minimum elements that shall be included in the permit application before the Department can determine whether an application is administratively complete and ready for technical review. It is not necessary to include an element if the Department has issued a written waiver regarding the element and the waiver accompanies the application. However, the Department shall not waive any federal requirements.

At all times before the Department has made a final decision regarding the application, an applicant has a duty to promptly supplement and correct information the applicant has submitted in an application to the Department. The applicant’s duty to supplement and correct the application includes but is not limited to relevant information acquired after the applicant has submitted the application and additional information the applicant otherwise determines is relevant to the application and the Department’s review and decision. While the Department is processing an application, regardless of whether the Department has determined the application is administratively complete, if the Department determines that additional information is necessary to evaluate or make a final decision regarding the application, the Department may request additional information and the applicant shall provide the requested additional information.

NOTICE REGARDING PERMIT APPEALS: A person who has applied for or has been issued an air quality permit by the Department shall be an obligatory party to a permit appeal filed pursuant to 20.11.81 NMAC.

NOTICE REGARDING SCOPE OF A PERMIT: The Department’s issuance of an air quality permit only authorizes the use of the specified equipment pursuant to the air quality control laws, regulations and conditions. Permits relate to air quality control only and are issued for the sole purpose of regulating the emission of air contaminants from said equipment. Air quality permits are not a general authorization for the location, construction and/or operation of a facility, nor does a permit authorize any particular land use or other form of land entitlement. It is the applicant’s/permittee’s responsibility to obtain all other necessary permits from the appropriate agencies, such as the City Planning Department or County Department of Planning and Development Services, including but not limited to site plan approvals, building permits, fire department approvals and the like, as may be required by law for the location, construction and/or operation of a facility. For more information, please visit the City Planning Department website at <https://www.cabq.gov/planning> and the County Department of Planning and Development Services website at <https://www.bernco.gov/planning>.

The Applicant shall:

20.11.41.13(A) NMAC – Pre-Application Requirements:

Item	Completed	N/A ¹	Waived ²
(1) Request a pre-application meeting with the Department using the pre-application meeting request form. Include a copy of the request form submitted to the Department.	<input checked="" type="checkbox"/>	<input type="checkbox"/>	<input type="checkbox"/>
(2) Attend the pre-application meeting. Date of pre-application meeting: 12/1/2023	<input checked="" type="checkbox"/>	<input type="checkbox"/>	<input type="checkbox"/>
Pre-application meeting agenda and public notice sign checklists included with application?	<input checked="" type="checkbox"/>	<input type="checkbox"/>	<input type="checkbox"/>

1. Not Applicable
2. It is not necessary to include an element if the Department has issued a written waiver regarding the element and the waiver accompanies the application. However, the Department shall not waive any federal requirements.

20.11.41.13(B) NMAC – Applicant’s Public Notice Requirements:

Item	Included in Application	N/A ¹	Waived ²
(1) Provide public notice in accordance with the regulation, including by certified mail or electronic copy to the designated representative(s) of the recognized neighborhood associations and recognized coalitions that are within one-half mile of the exterior boundaries of the property on which the source is or is proposed to be located.	<input checked="" type="checkbox"/>	<input type="checkbox"/>	<input type="checkbox"/>
<ul style="list-style-type: none"> • Contact list of representative(s) of recognized neighborhood associations and recognized coalitions cannot be more than three months old from the application submittal date. • Include contact list provided by Department in application submittal. 	<input checked="" type="checkbox"/>	<input type="checkbox"/>	<input type="checkbox"/>
<ul style="list-style-type: none"> • Provide notice using the Notice of Intent to Construct form and Applicant Notice Cover Letter. 	<input checked="" type="checkbox"/>	<input type="checkbox"/>	<input type="checkbox"/>
(2) In accordance with the regulation, post and maintain in a visible location a weather proof sign provided by the Department. Include pictures in application.	<input checked="" type="checkbox"/>	<input type="checkbox"/>	<input type="checkbox"/>
Documentary proof of all public notice requirements listed above and required by 20.11.41.13(E)(15) included with application?	<input checked="" type="checkbox"/>	<input type="checkbox"/>	<input type="checkbox"/>

1. Not Applicable; For emergency permits, the public notice requirements in 20.11.41.24 NMAC shall apply instead.
2. It is not necessary to include an element if the Department has issued a written waiver regarding the element and the waiver accompanies the application. However, the Department shall not waive any federal requirements.

20.11.41.13(D) NMAC

Item	Included in Application
A person who is seeking a construction permit pursuant to 20.11.41 NMAC shall complete a permit application and file one complete original and one duplicate copy with the Department.	<input checked="" type="checkbox"/>
<ul style="list-style-type: none"> • A high-quality electronic duplicate copy is required by the Department to speed up review and allow for the Department public notice to be posted online. The electronic copy must be an exact duplicate of the hardcopy original, including pages with signatures such as the application certification page. Note: Do not include financial information, such as a copy of a check, in the electronic PDF. 	<input checked="" type="checkbox"/>
The electronic submittal on thumb drive, unless alternate method is allowed by the Department, must also include modeling files, if applicable, and emission calculations file(s) in Microsoft Excel-compatible format.	<input checked="" type="checkbox"/>

The Permit Application shall include:

20.11.41.13(E) NMAC – Application Contents

Item	Included in Application	N/A ¹	Waived ²
(1) A complete permit application on the most recent form provided by the Department.	<input checked="" type="checkbox"/>	<input type="checkbox"/>	<input type="checkbox"/>
(2) The application form includes:			
a. The applicant’s name, street and post office address, and contact information;	<input checked="" type="checkbox"/>	<input type="checkbox"/>	<input type="checkbox"/>
b. The facility owner/ operator’s name, street address and mailing address, if different from the applicant;	<input checked="" type="checkbox"/>	<input type="checkbox"/>	<input type="checkbox"/>
c. The consultant’s name and contact information, if applicable;	<input checked="" type="checkbox"/>	<input type="checkbox"/>	<input type="checkbox"/>
d. All information requested on the application form is included (<i>i.e.</i> , the form is complete).	<input checked="" type="checkbox"/>	<input type="checkbox"/>	<input type="checkbox"/>
(3) The date the application was submitted to the Department.	<input checked="" type="checkbox"/>	<input type="checkbox"/>	<input type="checkbox"/>
(4) Sufficient attachments for the following:			
a. Ambient impact analysis using an atmospheric dispersion model approved by the U.S. Environmental Protection Agency, and the Department to demonstrate compliance with the applicable National Ambient Air Quality Standards (NAAQS). <i>See</i> 20.11.1 NMAC. If you are modifying an existing source, the modeling must include the emissions of the entire source to demonstrate the impact the new or modified source(s) will have on existing plant emissions.	<input type="checkbox"/>	<input checked="" type="checkbox"/>	<input type="checkbox"/>
b. The air dispersion model has been executed pursuant to a protocol that was approved in advance by the Department.	<input type="checkbox"/>	<input checked="" type="checkbox"/>	<input type="checkbox"/>
c. Air dispersion modeling approved (or 2 nd denied) protocol date:	<input type="checkbox"/>	<input checked="" type="checkbox"/>	<input type="checkbox"/>
d. Basis or source for each emission rate (including manufacturer’s specification sheets, AP-42 section sheets, test data, or corresponding supporting documentation for any other source used).	<input checked="" type="checkbox"/>	<input type="checkbox"/>	<input type="checkbox"/>
e. All calculations used to estimate potential emission rates and controlled/proposed emissions.	<input checked="" type="checkbox"/>	<input type="checkbox"/>	<input type="checkbox"/>
f. Basis for the estimated control efficiencies and sufficient engineering data for verification of the control equipment operation, including if necessary, design, drawing, test report and factors which affect the normal operation.	<input type="checkbox"/>	<input checked="" type="checkbox"/>	<input type="checkbox"/>
g. Fuel data for each existing and/or proposed piece of fuel burning equipment.	<input type="checkbox"/>	<input checked="" type="checkbox"/>	<input type="checkbox"/>
h. Anticipated maximum production capacity of the entire facility and the requested production capacity after construction and/or modification.	<input type="checkbox"/>	<input checked="" type="checkbox"/>	<input type="checkbox"/>
i. Stack and exhaust gas parameters for all existing and proposed emission stacks.	<input checked="" type="checkbox"/>	<input type="checkbox"/>	<input type="checkbox"/>
(5) An operational and maintenance strategy detailing:	<input checked="" type="checkbox"/>	<input type="checkbox"/>	<input type="checkbox"/>
a. the steps the applicant will take if a malfunction occurs that may cause emission of a regulated air contaminant to exceed a limit that is included in the permit;	<input checked="" type="checkbox"/>	<input type="checkbox"/>	<input type="checkbox"/>
b. the nature of emissions during routine startup or shutdown of the source and the source’s air pollution control equipment; and	<input checked="" type="checkbox"/>	<input type="checkbox"/>	<input type="checkbox"/>
c. the steps the applicant will take to minimize emissions during routine startup or shutdown.	<input checked="" type="checkbox"/>	<input type="checkbox"/>	<input type="checkbox"/>
(6) A map, such as a 7.5’-topographic quadrangle map published by the U.S. Geological Survey or a map of equivalent or greater scale, detail, and precision, including a City or County zone atlas map that shows the proposed location of each process equipment unit involved in the proposed construction, modification, or operation of the source, as applicable.	<input checked="" type="checkbox"/>	<input type="checkbox"/>	<input type="checkbox"/>

Item	Included in Application	N/A ¹	Waived ²
(7) An aerial photograph showing the proposed location of each process equipment unit involved in the proposed construction, modification, relocation or technical revision of the source except for federal agencies or departments involved in national defense or national security as confirmed and agreed to by the Department in writing.	<input checked="" type="checkbox"/>	<input type="checkbox"/>	<input type="checkbox"/>
(8) A complete description of all sources of regulated air contaminants and a process flow diagram depicting the process equipment unit or units at the facility, both existing and proposed, that are proposed to be involved in routine operations and from which regulated air contaminant emissions are expected to be emitted.	<input checked="" type="checkbox"/>	<input type="checkbox"/>	<input type="checkbox"/>
(9) A full description of air pollution control equipment, including all calculations and the basis for all control efficiencies presented, manufacturer's specifications sheets, and site layout and assembly drawings; UTM (universal transverse mercator) coordinates shall be used to identify the location of each emission unit.	<input checked="" type="checkbox"/>	<input type="checkbox"/>	<input type="checkbox"/>
(10) A description of the equipment or methods proposed by the applicant to be used for emission measurement.	<input checked="" type="checkbox"/>	<input type="checkbox"/>	<input type="checkbox"/>
(11) The maximum and normal operating time schedules of the source after completion of construction or modification, as applicable.	<input checked="" type="checkbox"/>	<input type="checkbox"/>	<input type="checkbox"/>
(12) Any other relevant information as the Department may reasonably require, including without limitation:	<input checked="" type="checkbox"/>	<input type="checkbox"/>	<input type="checkbox"/>
a. Provide an applicability determination for all potentially applicable federal regulations.	<input checked="" type="checkbox"/>	<input type="checkbox"/>	<input type="checkbox"/>
b. Applicants shall provide documentary proof that the proposed air quality permitted use of the facility's subject property is allowed by the zoning designation of the City or County zoning laws, as applicable. Sufficient documentation includes: (i) a zoning certification from the City Planning Department or County Department of Planning and Development Services, as applicable, if the property is subject to City or County zoning jurisdiction; or (ii) a zoning verification from both planning departments if the property is not subject to City or County zoning jurisdiction. ³ A zone atlas map shall not be sufficient.	<input checked="" type="checkbox"/>	<input type="checkbox"/>	<input type="checkbox"/>
c. Compliance History Disclosure Form ⁴	<input checked="" type="checkbox"/>	<input type="checkbox"/>	<input type="checkbox"/>
(13) The signature of the applicant, operator, owner or an authorized representative, certifying to the accuracy of all information as represented in the application and attachments, if any.	<input checked="" type="checkbox"/>	<input type="checkbox"/>	<input type="checkbox"/>
(14) A check or money order for the appropriate application fee or fees required by 20.11.2 NMAC, Fees. (Online fee payments are now accepted as well. Application must be submitted first, then Department will provide invoice for online payment.)	<input checked="" type="checkbox"/>	<input type="checkbox"/>	<input type="checkbox"/>

1. Not Applicable

2. It is not necessary to include an element if the Department has issued a written waiver regarding the element and the waiver accompanies the application. However, the Department shall not waive any federal requirements.

3. Applicants are not required to submit documentation for the subject property's zoning designation when applying for a relocation of a portable stationary source, or a technical or administrative revision to an existing permit.

4. Required for applications filed pursuant to the following regulations: Construction Permits (20.11.41 NMAC); Operating Permits (20.11.42 NMAC); Nonattainment Areas (20.11.60 NMAC); Prevention of Significant Deterioration (20.11.61 NMAC); and Acid Rain (20.11.62 NMAC); except this Form shall not be required for asbestos notifications under 20.11.20.22 NMAC, and this Form shall only be required for administrative permit revision (20.11.41.28(A) NMAC) and administrative permit amendments (20.11.42.12(E)(1) NMAC) when the action requested is a transfer of ownership. Air Quality Program staff can answer basic questions about the Compliance History Disclosure Form but will not provide specific advice about which boxes to check or whether information must be disclosed. The decision about how to answer a question and whether there is information to disclose is the responsibility of applicants/permittees.



**City of Albuquerque – Environmental Health Department
Air Quality Program**



Please mail this application to **P.O. Box 1293, Albuquerque, NM 87103**
or hand deliver between 8:00 am – 5:00 pm Monday – Friday to:
3rd Floor, Suite 3023 – One Civic Plaza NW, Albuquerque, NM 87102
(505) 768-1972 aqd@cabq.gov

**Application for Air Pollutant Sources in Bernalillo County
Source Registration (20.11.40 NMAC) and Construction Permits (20.11.41 NMAC)**

Submittal Date: 01/30/2024

Owner/Corporate Information Check here and leave this section blank if information is exactly the same as Facility Information below.

Company Name: Albuquerque Bernalillo County Water Utility Authority			
Mailing Address: P.O. Box 568	City: Albuquerque	State: NM	Zip: 87103
Company Phone: (505) 289-3382	Company Contact: Danielle Shuryn		
Company Contact Title: Compliance Manager	Phone: (505) 289-3382	E-mail: dshuryn@abcwua.org	

Stationary Source (Facility) Information: Provide a plot plan (legal description/drawing of the facility property) with overlay sketch of facility processes, location of emission points, pollutant type, and distances to property boundaries.

Facility Name: Albuquerque Bernalillo County Water Utility Authority			
Facility Physical Address: 7401 Paseo del Volcan NW	City: Albuquerque	State: NM	Zip: 87121
Facility Mailing Address (if different): P.O. Box 568	City: Albuquerque	State: NM	Zip: 87103
Facility Contact: Joel Berman	Title: Plant Division Manager		
Phone: (505) 289-3524	E-mail: jberman@abcwua.org		
Authorized Representative Name ¹ : Mark S. Sanchez	Authorized Representative Title: Executive Director		

Billing Information Check here if same contact and mailing address as corporate Check here if same as facility

Billing Company Name:			
Mailing Address:	City:	State:	Zip:
Billing Contact:	Title:		
Phone:	E-mail:		

Preparer/Consultant(s) Information Check here and leave section blank if no Consultant used or Preparer is same as Facility Contact.

Name: Martin R. Schluep, Alliant Environmental, LLC	Title: Principal		
Mailing Address: 7804 Pan American Fwy. NE	City: Albuquerque	State: NM	Zip: 87109
Phone: (505)205-4819	Email: mschluep@alliantenv.com		

1. See 20.11.41.13(E)(13) NMAC.

**Application for Air Pollutant Sources in Bernalillo County
Source Registration (20.11.40 NMAC) and Construction Permits (20.11.41 NMAC)**

General Operation Information (if any question does not pertain to your facility, type N/A on the line or in the box)

Permitting action being requested (please refer to the definitions in 20.11.40 NMAC or 20.11.41 NMAC):				
<input type="checkbox"/> New Permit	<input checked="" type="checkbox"/> Permit Modification Current Permit #: 1737	<input type="checkbox"/> Technical Permit Revision Current Permit #:	<input type="checkbox"/> Administrative Permit Revision Current Permit #:	
<input type="checkbox"/> New Registration Certificate	<input type="checkbox"/> Modification Current Reg. #:	<input type="checkbox"/> Technical Revision Current Reg. #:	<input type="checkbox"/> Administrative Revision Current Reg. #:	
UTM coordinates of facility (Zone 13, NAD 83): Lift Station #13: 336,740 E 3,892,388 N Lift Station #14: 337,271 E 3,888,982 N				
Facility type (<i>i.e.</i> , a description of your facility operations): Two diesel powered emergency generator engines, one located at Lift Station #13 and one at Lift Station #14				
Standard Industrial Classification (SIC Code #): 6141		North American Industry Classification System (NAICS Code #): 52221		
Is this facility currently operating in Bernalillo County? Yes		If YES , list date of original construction: August 13, 2004 If NO , list date of planned startup:		
Is the facility permanent? Yes		If NO , list dates for requested temporary operation: From Through		
Is the facility a portable stationary source? No		If YES , is the facility address listed above the main permitted location for this source? Yes		
Is the application for a physical or operational change, expansion, or reconstruction (<i>e.g.</i> , altering process, or adding, or replacing process or control equipment, etc.) to an existing facility? No				
Provide a description of the requested changes: Revise each permitted emergency engine's horse power (hp) from 150 hp to 166 hp. These generator engines were permitted in 2004 for back-up power in the event of utility power loss.				
What is the facility's operation? <input type="checkbox"/> Continuous <input checked="" type="checkbox"/> Intermittent <input type="checkbox"/> Batch				
Estimated percent of production/operation:	Jan-Mar: 125 hours	Apr-Jun: 125 hours	Jul-Sep: 125 hours	Oct-Dec: 125 hours
Requested operating times of facility:	1.37 hours/day	7 days/week	4 weeks/month	12 months/year
Will there be special or seasonal operating times other than shown above? This includes monthly- or seasonally-varying hours. No				
If YES , please explain:				
List raw materials processed: Diesel				
List saleable item(s) produced: N/A				

USE INSTRUCTIONS: For the forms on the following pages, please do not alter or delete the existing footnotes or page breaks. If additional footnotes are needed then add them to the end of the existing footnote list for a given table. Only update the rows and cells within tables as necessary for your project. Unused rows can be deleted from tables. If multiple scenarios will be represented then the Uncontrolled and Controlled Emission Tables, and other tables as needed, can be duplicated and adjusted to indicate the different scenarios.

**Application for Air Pollutant Sources in Bernalillo County
Source Registration (20.11.40 NMAC) and Construction Permits (20.11.41 NMAC)**

Regulated Emission Sources Table

(E.g., Generator-Crusher-Screen-Conveyor-Boiler-Mixer-Spray Guns-Saws-Sander-Oven-Dryer-Furnace-Incinerator-Haul Road-Storage Pile, etc.) Match the Units listed on this Table to the same numbered line if also listed on Emissions Tables & Stack Table.

Unit Number and Description ¹	Manufacturer	Model #	Serial #	Manufacture Date	Installation Date	Modification Date ²	Process Rate or Capacity (Hp, kW, Btu, ft ³ , lbs, tons, yd ³ , etc.) ³	Fuel Type
Ex. 1. Generator	Unigen	B-2500	A567321C	7/1996	7/1997	11/2020	250 Hp/HR	Diesel
Ex. 2. Spray Gun	HVLP Systems	Spra-N-Stay 1100	K26-56-95	01/2017	11/2017	N/A	0.25 gal./HR	Electric Compressor
1 Lift Station #13 Diesel powered emergency generator engine	Perkins	1006-GT	158328/21	04/2004	08/2004	N/A	166 hp/hr	Diesel
2 Lift Station #14 Diesel powered emergency generator engine	Perkins	1006-GT	158328/01	04/2004	08/2004	N/A	166 hp/hr	Diesel
							/	
							/	
							/	
							/	
							/	
							/	
							/	
							/	
							/	
							/	
							/	
							/	
							/	
							/	
							/	
							/	
							/	
							/	
							/	

**Application for Air Pollutant Sources in Bernalillo County
Source Registration (20.11.40 NMAC) and Construction Permits (20.11.41 NMAC)**

Unit Number and Description ¹	Manufacturer	Model #	Serial #	Manufacture Date	Installation Date	Modification Date ²	Process Rate or Capacity (Hp, kW, Btu, ft ³ , lbs, tons, yd ³ , etc.) ³	Fuel Type
							/	
							/	
							/	
							/	
							/	
							/	
							/	

NOTE: To add extra rows in Word, click anywhere in the last row. A plus (+) sign should appear on the bottom right corner of the row. Click the plus (+) sign to add a row. Repeat as needed.

1. Unit numbers must correspond to unit numbers in the previous permit unless a complete cross reference table of all units in both permits is provided.
2. To determine whether a unit has been modified, evaluate if changes have been made to the unit that impact emissions or that trigger modification as defined in 20.11.41.7(U) NMAC. If not, put N/A.
3. Basis for Equipment Process Rate or Capacity (e.g., Manufacturer’s Data, Field Observation/Test, etc.) **Vendor provided information**
Submit information for each unit as an attachment.

**Application for Air Pollutant Sources in Bernalillo County
Source Registration (20.11.40 NMAC) and Construction Permits (20.11.41 NMAC)**

Emissions Control Equipment Table

Control Equipment Units listed on this Table should either match up to the same Unit number as listed on the Regulated Emission Sources, Controlled Emissions and Stack Parameters Tables (if the control equipment is integrated with the emission unit) or should have a distinct Control Equipment Unit Number and that number should then also be listed on the Stack Parameters Table.

Control Equipment Unit Number and Description		Controlling Emissions for Unit Number(s)	Manufacturer	Model # Serial #	Date Installed	Controlled Pollutant(s)	% Control Efficiency ¹	Method Used to Estimate Efficiency	Rated Process Rate or Capacity or Flow
Ex. 8b	Baghouse	3,4,5	Best Baghouses	C-12010 A16925	11/12/2019	PM ₁₀ , PM _{2.5}	99%	Manufacturer's Data	1,500 ACFM
	None								

NOTE: To add extra rows in Word, click anywhere in the last row. A plus (+) sign should appear on the bottom right corner of the row. Click the plus (+) sign to add a row. Repeat as needed.

1. Basis for Control Equipment % Efficiency (e.g., Manufacturer's Data, Field Observation/Test, AP-42, etc.). _____
Submit information for each unit as an attachment.

**Application for Air Pollutant Sources in Bernalillo County
Source Registration (20.11.40 NMAC) and Construction Permits (20.11.41 NMAC)**

Exempted Sources and Exempted Activities Table

See 20.11.41 NMAC for exemptions.

Unit Number and Description		Manufacturer	Model #	Serial #	Manufacture Date	Installation Date	Modification Date ¹	Process Rate or Capacity (Hp, kW, Btu, ft ³ , lbs, tons, yd ³ , etc.) ²	Fuel Type
Ex. 1.	Boiler	Unigen	B-2500	A567321C	7/1996	7/1997	11/2020	3.5 MMBtu/HR	Natural Gas
Ex. 2.	Hot Water Heater	HVLP Systems	6500A	K26-56-95	01/2017	11/2017	N/A	80 gal./HR	Natural Gas
	None							/	
								/	
								/	
								/	
								/	
								/	
								/	
								/	
								/	
								/	
								/	
								/	
								/	
								/	
								/	
								/	

NOTE: To add extra rows in Word, click anywhere in the last row. A plus (+) sign should appear on the bottom right corner of the row. Click the plus (+) sign to add a row. Repeat as needed.

- To determine whether a unit has been modified, evaluate if changes have been made to the unit that impact emissions or that trigger modification as defined in 20.11.41.7(U) NMAC. Also, consider if any changes that were made alter the status from exempt to non-exempt. If not, put N/A.
- Basis for Equipment Process Rate or Capacity (e.g., Manufacturer’s Data, Field Observation/Test, etc.) ____
Submit information for each unit as an attachment.

**Application for Air Pollutant Sources in Bernalillo County
Source Registration (20.11.40 NMAC) and Construction Permits (20.11.41 NMAC)**

Uncontrolled Emissions Table

(Process potential under physical/operational limitations during a 24 hr/day and 365 day/year = 8760 hrs)

Regulated Emission Units listed on this Table should match up to the same numbered line and Unit as listed on the Regulated Emissions and Controlled Tables. List total HAP values per Emission Unit if overall HAP total for the facility is ≥ 1 ton/yr.

Unit Number*	Nitrogen Oxides (NO _x)		Carbon Monoxide (CO)		Nonmethane Hydrocarbons/Volatile Organic Compounds (NMHC/VOCs)		Sulfur Dioxide (SO ₂)		Particulate Matter ≤ 10 Microns (PM ₁₀)		Particulate Matter ≤ 2.5 Microns (PM _{2.5})		Hazardous Air Pollutants (HAPs)		Method(s) used for Determination of Emissions (AP-42, Material Balance, Field Tests, etc.)
	lb/hr	ton/yr	lb/hr	ton/yr	lb/hr	ton/yr	lb/hr	ton/yr	lb/hr	ton/yr	lb/hr	ton/yr	lb/hr	ton/yr	
Example 1.	27.7	121.3	9.1	39.9	1.3	5.7	0.5	2.2	2.0	8.8	0.2	0.4	0.2	0.4	AP-42 Section 3.3
1 Lift Station #13	5.15	22.54	1.11	4.86	0.41	1.80	0.34	1.49	0.37	1.60	0.37	1.60	0.01	0.04	AP-42 Section 3.3
2 Lift Station #14	5.15	22.54	1.11	4.86	0.41	1.80	0.34	1.49	0.37	1.60	0.37	1.60	0.01	0.04	AP-42 Section 3.3

**Application for Air Pollutant Sources in Bernalillo County
Source Registration (20.11.40 NMAC) and Construction Permits (20.11.41 NMAC)**

Unit Number*	Nitrogen Oxides (NO _x)		Carbon Monoxide (CO)		Nonmethane Hydrocarbons/Volatile Organic Compounds (NMHC/VOCs)		Sulfur Dioxide (SO ₂)		Particulate Matter ≤ 10 Microns (PM ₁₀)		Particulate Matter ≤ 2.5 Microns (PM _{2.5})		Hazardous Air Pollutants (HAPs)		Method(s) used for Determination of Emissions (AP-42, Material Balance, Field Tests, etc.)
	lb/hr	ton/yr	lb/hr	ton/yr	lb/hr	ton/yr	lb/hr	ton/yr	lb/hr	ton/yr	lb/hr	ton/yr	lb/hr	ton/yr	
Totals of Uncontrolled Emissions	10.29	45.08	2.22	9.71	0.82	3.59	0.68	2.98	0.73	3.20	0.73	3.20	0.02	0.08	

NOTE: To add extra rows in Word, click anywhere in the second-to-last row. A plus (+) sign should appear on the bottom right corner of the row. Click the plus (+) sign to add a row. Repeat as needed.

*A permit is required and this application along with the additional checklist information requested on the Permit Application checklist must be provided if:

(1) any one of these process units or combination of units, has an uncontrolled emission rate greater than or equal to (≥) 10 lbs/hr or 25 tons/yr for any of the above pollutants, excluding HAPs, based on 8,760 hours of operation; or

(2) any one of these process units or combination of units, has an uncontrolled emission rate ≥ 2 tons/yr for any single HAP or ≥ 5 tons/yr for any combination of HAPs based on 8,760 hours of operation; or

(3) any one of these process units or combination of units, has an uncontrolled emission rate ≥ 5 tons/yr for lead (Pb) or any combination of lead and its compounds based on 8,760 hours of operation; or

(4) any one of the process units or combination of units is subject to an Air Board or federal emission limit or standard.

* If all of these process units, individually and in combination, have an uncontrolled emission rate less than (<) 10 lbs/hr or 25 tons/yr for all of the above pollutants (based on 8,760 hours of operation), but > 1 ton/yr for any of the above pollutants, then a source registration is required. A Registration is required, at minimum, for any amount of HAP emissions. Please complete the remainder of this form.

**Application for Air Pollutant Sources in Bernalillo County
Source Registration (20.11.40 NMAC) and Construction Permits (20.11.41 NMAC)**

Controlled Emissions Table

(Based on current operations with emission controls OR requested operations with emission controls)

Regulated Emission Units listed on this Table should match up to the same numbered line and Unit as listed on the Regulated Emissions and Uncontrolled Tables. List total HAP values per Emission Unit if overall HAP total for the facility is ≥ 1 ton/yr.

Unit Number	Nitrogen Oxides (NO _x)		Carbon Monoxide (CO)		Nonmethane Hydrocarbons/Volatile Organic Compounds (NMHC/VOCs)		Sulfur Dioxide (SO ₂)		Particulate Matter ≤ 10 Microns (PM ₁₀)		Particulate Matter ≤ 2.5 Microns (PM _{2.5})		Hazardous Air Pollutants (HAPs)		Control Method	% Efficiency ¹
	lb/hr	ton/yr	lb/hr	ton/yr	lb/hr	ton/yr	lb/hr	ton/yr	lb/hr	ton/yr	lb/hr	ton/yr	lb/hr	ton/yr		
Example 1.	27.7	55.4	9.1	18.2	1.3	2.6	0.5	1.0	2.0	4.0	0.2	0.088	0.2	0.088	Operating Hours	N/A
1 Lift Station #13	5.15	1.287	1.11	0.277	0.41	0.103	0.34	0.085	0.365	0.09	0.365	0.09	0.01	0.01	Operating Hours	N/A
2 Lift Station #14	5.15	1.287	1.11	0.277	0.41	0.103	0.34	0.085	0.365	0.09	0.365	0.09	0.01	0.01	Operating Hours	N/A

**Application for Air Pollutant Sources in Bernalillo County
Source Registration (20.11.40 NMAC) and Construction Permits (20.11.41 NMAC)**

Unit Number	Nitrogen Oxides (NO _x)		Carbon Monoxide (CO)		Nonmethane Hydrocarbons/Volatile Organic Compounds (NMHC/VOCs)		Sulfur Dioxide (SO ₂)		Particulate Matter ≤ 10 Microns (PM ₁₀)		Particulate Matter ≤ 2.5 Microns (PM _{2.5})		Hazardous Air Pollutants (HAPs)		Control Method	% Efficiency ¹
	lb/hr	ton/yr	lb/hr	ton/yr	lb/hr	ton/yr	lb/hr	ton/yr	lb/hr	ton/yr	lb/hr	ton/yr	lb/hr	ton/yr		
Totals of Controlled Emissions	10.29	2.57	2.22	0.55	0.82	0.21	0.68	0.17	0.73	0.18	0.73	0.18	0.02	0.02		

NOTE: To add extra rows in Word, click anywhere in the second-to-last row. A plus (+) sign should appear on the bottom right corner of the row. Click the plus (+) sign to add a row. Repeat as needed.

1. Basis for Control Method % Efficiency (e.g., Manufacturer’s Data, Field Observation/Test, AP-42, etc.). **N/A**
Submit information for each unit as an attachment.

**Application for Air Pollutant Sources in Bernalillo County
Source Registration (20.11.40 NMAC) and Construction Permits (20.11.41 NMAC)**

Hazardous Air Pollutants (HAPs) Emissions Table

Report the Potential Emission Rate for each HAP from each source on the Regulated Emission Sources Table that emits a given HAP. Report individual HAPs with ≥ 1 ton/yr total emissions for the facility on this table. Otherwise, report total HAP emissions for each source that emits HAPs and report individual HAPs in the accompanying application package in association with emission calculations. If this application is for a Registration solely due to HAP emissions, report the largest HAP emissions on this table and the rest, if any, in the accompanying application package.

Unit Number	Total HAPs															
	lb/hr	ton/yr	lb/hr	ton/yr	lb/hr	ton/yr	lb/hr	ton/yr	lb/hr	ton/yr	lb/hr	ton/yr	lb/hr	ton/yr	lb/hr	ton/yr
Example 1.	6.3	18.2	3.2	8.5	2.3	7.7	0.5	1.0	0.3	1.0	N/A	N/A	N/A	N/A	N/A	N/A
1 Lift Station #13	0.01	0.01														
2 Lift Station #14	0.01	0.01														
Totals of HAPs for all units:	0.02	0.02														

NOTE: To add extra rows in Word, click anywhere in the second-to-last row. A plus (+) sign should appear on the bottom right corner of the row. Click the plus (+) sign to add a row. Repeat as needed.

Use Instructions: Copy and paste the HAPs table here if need to list more individual HAPs.

**Application for Air Pollutant Sources in Bernalillo County
Source Registration (20.11.40 NMAC) and Construction Permits (20.11.41 NMAC)**

Purchased Hazardous Air Pollutant Table*

Product Categories (Coatings, Solvents, Thinners, etc.)	Hazardous Air Pollutant (HAP), or Volatile Hazardous Air Pollutant (VHAP) Primary To The Representative As Purchased Product	Chemical Abstract Service (CAS) Number of HAP or VHAP from Representative As Purchased Product	HAP or VHAP Concentration of Representative As Purchased Product (pounds/gallon, or %)	Concentration Determination (CPDS, SDS, etc.) ¹	Total Product Purchases For Category		Quantity of Product Recovered & Disposed For Category		Total Product Usage For Category
					lb/yr	gal/yr	lb/yr	gal/yr	
Example 1. Surface Coatings	Xylene	1330207	4.0 lbs/gal	SDS	lb/yr	(-)	lb/yr	(=)	lb/yr
					100 gal/yr	(-)	0 gal/yr	(=)	100 gal/yr
Example 2. Cleaning Solvents	Toluene	108883	70%	Product Label	lb/yr	(-)	lb/yr	(=)	lb/yr
					200 gal/yr	(-)	50 gal/yr	(=)	150 gal/yr
1. None					lb/yr	(-)	lb/yr	(=)	lb/yr
					gal/yr	(-)	gal/yr	(=)	gal/yr
2.					lb/yr	(-)	lb/yr	(=)	lb/yr
					gal/yr	(-)	gal/yr	(=)	gal/yr
3.					lb/yr	(-)	lb/yr	(=)	lb/yr
					gal/yr	(-)	gal/yr	(=)	gal/yr
4.					lb/yr	(-)	lb/yr	(=)	lb/yr
					gal/yr	(-)	gal/yr	(=)	gal/yr
5.					lb/yr	(-)	lb/yr	(=)	lb/yr
					gal/yr	(-)	gal/yr	(=)	gal/yr
6.					lb/yr	(-)	lb/yr	(=)	lb/yr
					gal/yr	(-)	gal/yr	(=)	gal/yr
7.					lb/yr	(-)	lb/yr	(=)	lb/yr
					gal/yr	(-)	gal/yr	(=)	gal/yr
8.					lb/yr	(-)	lb/yr	(=)	lb/yr
					gal/yr	(-)	gal/yr	(=)	gal/yr
9.					lb/yr	(-)	lb/yr	(=)	lb/yr
					gal/yr	(-)	gal/yr	(=)	gal/yr
.					lb/yr	(-)	lb/yr	(=)	lb/yr
					gal/yr	(-)	gal/yr	(=)	gal/yr
TOTALS					lb/yr	(-)	lb/yr	(=)	lb/yr
					gal/yr	(-)	gal/yr	(=)	gal/yr

NOTE: To add extra rows in Word, click anywhere in the second-to-last row. A plus (+) sign should appear on the bottom right corner of the row. Click the plus (+) sign to add a row. Repeat as needed.

NOTE: Product purchases, recovery/disposal and usage should be converted to the units listed in this table. If units cannot be converted please contact the Air Quality Program prior to making changes to this table.

1. Submit, as an attachment, information on one (1) product from each Category listed above which best represents the average of all the products purchased in that Category. CPDS = Certified Product Data Sheet; SDS = Safety Data Sheet

*** A Registration is required, at minimum, for any amount of HAP or VHAP emission.**

Emissions from purchased HAP usage should be accounted for on previous tables as appropriate.

A permit may be required for these emissions if the source meets the requirements of 20.11.41 NMAC.

**Application for Air Pollutant Sources in Bernalillo County
Source Registration (20.11.40 NMAC) and Construction Permits (20.11.41 NMAC)**

Material and Fuel Storage Table

(E.g., Tanks, barrels, silos, stockpiles, etc.)

Storage Equipment		Product Stored	Capacity (bbls, tons, gals, acres, etc.)	Above or Below Ground	Construction (Welded, riveted) & Color	Installation Date	Loading Rate ¹	Offloading Rate ¹	True Vapor Pressure	Control Method	Seal Type	% Eff. ²
Ex. 1.	Tank	Diesel Fuel	5,000 gal.	Below	Welded/Brown	3/1993	3,000 gal/hr	500 gal/hr	N/A	N/A	N/A	N/A
Ex. 2.	Barrels	Solvent	55 gal. drum	Above	Welded/Green	N/A	N/A	N/A	N/A	N/A	N/A	N/A
1	Engine Fuel Tank	Diesel Fuel	194 gal.	Above	Welded	04/2004	194 gal/hr	N/A	0.009 psia	N/A	N/A	N/A
2	Engine Fuel Tank	Diesel Fuel	194 gal.	Above	Welded	04/2004	194 gal/hr	N/A	0.009 psia	N/A	N/A	N/A

NOTE: To add extra rows in Word, click anywhere in the last row. A plus (+) sign should appear on the bottom right corner of the row. Click the plus (+) sign to add a row. Repeat as needed.

1. Basis for Loading/Offloading Rate (*e.g.*, Manufacturer's Data, Field Observation/Test, etc.). **Estimated integrated fuel tank loading**
Submit information for each unit as an attachment.
2. Basis for Control Method % Efficiency (*e.g.*, Manufacturer's Data, Field Observation/Test, AP-42, etc.). **N/A**
Submit information for each unit as an attachment.

**Application for Air Pollutant Sources in Bernalillo County
Source Registration (20.11.40 NMAC) and Construction Permits (20.11.41 NMAC)**

Stack Parameters Table

If any equipment from the Regulated Emission Sources Table is also listed in this Stack Table, use the same numbered line for the emission unit on both tables to show the association between the Process Equipment and its stack.

Unit Number and Description		Pollutant (CO, NOx, PM ₁₀ , etc.)	UTM Easting (m)	UTM Northing (m)	Stack Height (ft)	Stack Exit Temp. (°F)	Stack Velocity (fps)	Stack Flow Rate (acfm)	Stack Inside Diameter (ft)	Stack Type
Ex. 1.	Generator	CO, NOx, PM ₁₀ , PM _{2.5} , SO ₂	349430.28	3884014.64	18	900 °F	150 fps	4524 acfm	0.8	Rain Cap
Ex. 2.	Spray Gun	PM ₁₀ , xylene, toluene	348540.1	3882928.5	9.2	Ambient	50 fps	589 acfm	0.5	Vertical
1	Lift Station #13	Emergency Generator Engine	336740	3892388	10 ft	1063 F	63 fps	744 acfm	0.5 ft	Horizontal
2	Lift Station #14	Emergency Generator Engine	337271	3888982	10 ft	1063 F	63 fps	744 acfm	0.5 ft	Horizontal
										Select
										Select
										Select

NOTE: To add extra rows in Word, click anywhere in the last row. A plus (+) sign should appear on the bottom right corner of the row. Click the plus (+) sign to add a row. Repeat as needed.

**Application for Air Pollutant Sources in Bernalillo County
Source Registration (20.11.40 NMAC) and Construction Permits (20.11.41 NMAC)**

Certification

NOTICE REGARDING SCOPE OF A PERMIT: The Environmental Health Department's issuance of an air quality permit only authorizes the use of the specified equipment pursuant to the air quality control laws, regulations and conditions. Permits relate to air quality control only and are issued for the sole purpose of regulating the emission of air contaminants from said equipment. Air quality permits are not a general authorization for the location, construction and/or operation of a facility, nor does a permit authorize any particular land use or other form of land entitlement. It is the applicant's/permittee's responsibility to obtain all other necessary permits from the appropriate agencies, such as the City of Albuquerque Planning Department or Bernalillo County Department of Planning and Development Services, including but not limited to site plan approvals, building permits, fire department approvals and the like, as may be required by law for the location, construction and/or operation of a facility. For more information, please visit the City of Albuquerque Planning Department website at <https://www.cabq.gov/planning> and the Bernalillo County Department of Planning and Development Services website at <https://www.bernco.gov/planning>.

NOTICE REGARDING ACCURACY OF INFORMATION AND DATA SUBMITTED: Any misrepresentation of a material fact in this application and its attachments is cause for denial of a permit or revocation of part or all of the resulting registration or permit, and revocation of a permit for cause may limit the permittee's ability to obtain any subsequent air quality permit for ten (10) years. Any person who knowingly makes any false statement, representation, or certification in any application, record, report, plan or other document filed or required to be maintained under the Air Quality Control Act, NMSA 1978 §§ 74-2-1 to 74-2-17, is guilty of a misdemeanor and shall, upon conviction, be punished by a fine of not more than ten thousand dollars (\$10,000) per day per violation or by imprisonment for not more than twelve months, or by both.

I, the undersigned, hereby certify that I have knowledge of the information and data represented and submitted in this application and that the same is true and accurate, including the information and data in any and all attachments, including without limitation associated forms, materials, drawings, specifications, and other data. I also certify that the information represented gives a true and complete portrayal of the existing, modified existing, or planned new stationary source with respect to air pollution sources and control equipment. I understand that there may be significant penalties for submitting false information, including the possibility of fines and imprisonment for knowing violations. I also understand that the person who has applied for or has been issued an air quality permit by the Department is an obligatory party to a permit appeal filed pursuant to 20.11.81 NMAC. Further, I certify that I am qualified and authorized to file this application, to certify the truth and accuracy of the information herein, and bind the source. Moreover, I covenant and agree to comply with any requests by the Department for additional information necessary for the Department to evaluate or make a final decision regarding the application.

Signed this 31st day of January, 2024

Mark S. Sanchez
Print Name

Executive Director
Print Title

Signature



Role: Owner Operator

Other Authorized Representative



City of Albuquerque Environmental Health Department Air Quality Program



Construction Permit (20.11.41 NMAC) Zoning Requirement Cover Letter

This Cover Letter Must Be Returned With The Application Along With All Required Attachments

The Albuquerque-Bernalillo County Joint Air Quality Program, which administers and enforces local air quality laws for the City of Albuquerque (“City”) and Bernalillo County (“County”), on behalf of the City Environmental Health Department (“Department”).

Any person seeking a new air quality permit or a permit modification under 20.11.41 NMAC (Construction Permits) shall provide documentary proof that the proposed air quality permitted use of the facility’s subject property is allowed by the zoning designation of the City or County zoning laws, as applicable. Sufficient documentation may include (i) a zoning certification from the City Planning Department or County Department of Planning and Development Services, as applicable, if the applicant is subject to City or County zoning jurisdiction; or (ii) a zoning verification from both planning departments if the applicant is not subject to City or County zoning jurisdiction. A zone atlas map shall not be sufficient. At this time, applicants are not required to submit documentation for the subject property’s zoning designation when applying for a relocation of a portable stationary source, or a technical or administrative revision to an existing permit.

The Department will rule an application administratively incomplete if it is missing or has incorrect information. If the Department has ruled an application administratively incomplete three (3) times, the Department will deny the permit application. Any fees submitted for processing an application that has been denied will not be refunded. If the Department denies an application, a person may submit a new application and the fee required for a new application. The applicant has the burden of demonstrating that a permit should be issued.

The Department may require additional information that is necessary to make a thorough review of an application. At all times before the Department has made a final decision regarding the application, an applicant has a duty to promptly supplement and correct information the applicant has submitted in an application to the Department. The applicant’s duty to supplement and correct the application includes, but is not limited to, relevant information acquired after the applicant has submitted the application and additional information the applicant otherwise determines is relevant to the application and the Department’s review and decision. While the Department is processing an application, regardless of whether the Department has determined the application is administratively complete, if the Department determines that additional information is necessary to evaluate or make a final decision regarding the application, the Department may request additional information and the applicant shall provide the requested additional information.

NOTICE REGARDING SCOPE OF A PERMIT: The Department’s issuance of an air quality permit only authorizes the use of the specified equipment pursuant to the air quality control laws, regulations and conditions. Permits relate to air quality control only and are issued for the sole purpose of regulating the emission of air contaminants from said equipment. Air quality permits are not a general authorization for the location, construction and/or operation of a facility, nor does a permit authorize any particular land use or other form of land entitlement. It is the applicant’s/permittee’s responsibility to obtain all other necessary permits from the appropriate agencies, such as the City Planning Department or County Department of Planning and Development Services, including but not limited to site plan approvals, building permits, fire department approvals and the like, as may be required by law for the location, construction and/or operation of a facility. For more information, please visit the City Planning Department website at <https://www.cabq.gov/planning> and the County Department of Planning and Development Services website at <https://www.bernco.gov/planning>.

Corporate and Facility Information: This information shall match the information in the permit application.

Air Quality Permit Applicant Company Name: Albuquerque Bernalillo County Water Utility Authority			
Facility Name: Albuquerque Bernalillo County Water Utility Authority			
Facility Physical Address: Double Eagle II Airport 7401 Paseo del Volcan NW	City: Albuquerque	State: NM	Zip: 87121
Facility Legal Description:			

General Operation Information: This information shall match the information in the permit application.

Permitting action being requested (please refer to the definitions in 20.11.41 NMAC):

- New Permit Permit Modification, Current Permit #: **1737**

Attachment Information: The location information provided to the City Planning Department or County Department of Planning and Development Services, as applicable, and reflected in the zoning certification or verifications, as applicable, shall be the same as the Facility location information provided to the Department in the air quality construction permit application.

<input type="checkbox"/> Zoning Certification Provided by: Choose an item. <i>This is a use-specific certification.</i> City Planning Form: https://www.cabq.gov/planning/code-enforcement-zoning County Planning Form: https://www.bernco.gov/planning/planning-and-land-use/applications-forms/	<input checked="" type="checkbox"/> City Zoning Verification <input checked="" type="checkbox"/> County Zoning Verification City Planning Form: https://www.cabq.gov/planning/code-enforcement-zoning County Planning Form: https://www.bernco.gov/planning/planning-and-land-use/applications-forms/
---	--

City of Albuquerque Property Report



www.cabq.gov/gis

Platted Parcel Address: 7401 ATRISCO VISTA BLVD NW
Assessor Parcel Address: 7401 PASEO DEL VOLCAN NW
Report Date: 12/12/2023

Bernalillo County Assessor Ownership Data

[\(Click here for more information\)](#)

Owner Name: BODE AERO SERVICES INC
Owner Address: PO BOX 19006 ALBUQUERQUE NM 87119-0006
Uniform Property Code (UPC): 100606212040020101A4 **Tax Year:** 2023 **Tax District:** A1A
Legal Description: (BLDG ONLY) WITHIN TR A BULK LAND PLAT OF DOUBLE EAGLE II AIRPORT & ADJACENT LAND
Property Class: C **Document Number:** See Bernalillo County Assessor Record Search Portal **Acres:** 0

Albuquerque Planning and Zoning Data

[Bernalillo County Planning and Zoning](#)

Jurisdiction: ALBUQUERQUE **Zone Atlas Page:** [E-06](#)
IDO Zone District: [NR-SU](#) **IDO District Definition:** Sensitive Use
Land Use: 09 | Airport **Lot:** A1 **Block:** 0000 **Subdivision:** DOUBLE EAGLE II AIRPORT

Neighborhood Associations

[Office of Neighborhood Coordination](#)

City Recognized Neighborhood Associations: N/A

Services

Police Beat: 624 **Area Command:** NORTHWEST
Residential Trash Pickup and Recycling: Friday

City Council Districts

City Council District: [1 - Louie Sanchez](#) **Councilor Email:** lesanchez@cabq.gov
Policy Analyst: Brandon MacEachen **Policy Analyst Email:** bmaceachen@cabq.gov **Policy Analyst Phone #:** 505-768-3111

Other Legislative Districts

US Congressional District: 2 - Gabriel Vasquez
County Commission District: 1 - Barbara Baca
NM House Of Representatives: 29 - Joy Garratt
NM Senate: 23 - Harold Pope

APS School Service Areas

[Albuquerque Public Schools](#)

Elementary School: TIERRA ANTIGUA **Middle School:** TONY HILLERMAN **High School:** VOLCANO VISTA

FEMA Flood Zone: X

[FEMA Flood Map Service Center](#)

Property Map



Context Map



CITY OF ALBUQUERQUE

CODE ENFORCEMENT

Plaza Del Sol Building, Suite 500
600 2nd Street NW
Albuquerque, NM 87102
Tel: (505) 924-3850 Fax: (505) 924-3847



Date: December 19, 2023

VIA Email, mschluep@alliantenv.com

Martin Schluep

Alliant Environmental, LLC

7804 Pan American Fwy, NE Ste 5

Albuquerque, NM 87109

RE: **7401 PASEO DEL VOLCAN NW** – the “property”.

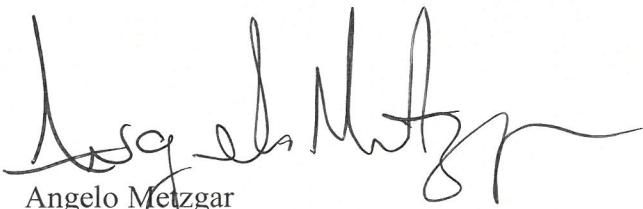
UPC: **100606212040020101A4**

To Whom It May Concern:

This letter will certify that according to the map on file in this office on December 19, 2023, the property located at: **7401 PASEO DEL VOLCAN NW**, legally described as: **(BLDG ONLY) WITHIN TR A BULK LAND PLAT OF DOUBLE EAGLE II AIRPORT & ADJACENT LAND**, Albuquerque, Bernalillo County, New Mexico, is Zoned: NR-SU Non-Residential - Sensitive Use Zone District. **The property is within the (APO) - Airport Protection Overlay Zones; Air Space Protection Sub-area & Runway Protection Sub-area.**

If you have any questions regarding this matter please feel free to contact code enforcement by email at codeenforcement@cabq.gov

Sincerely:



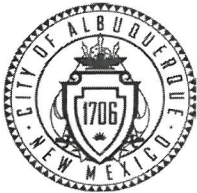
Angelo Metzgar
Code Compliance Manager

CITY OF ALBUQUERQUE – PLANNING DEPARTMENT
CODE ENFORCEMENT DIVISION

ZONING VERIFICATION REQUEST

DID YOU REMEMBER TO...

- Verify that the property is located within the city limits?
- Provide the legal description of the property and/or the Uniform Property Code (UPC) number?
- Submit your request at least seven (7) days before the verification statement is needed?



City of Albuquerque
 PO Box 1293
 Albuquerque, New Mexico 87103
www.cabq.gov

SUBJECT PROPERTY

7401 Paseo del Volcan NW
 ADDRESS

A1 0000 Double Eagle II Airport
 LOT BLOCK SUBDIVISION

100606212040020101 A4
 UPC #

Bode Aero Services Inc.
 OWNER OF RECORD

APPLICANT INFORMATION

Martin Schluep
 NAME

Alliant Environmental, LLC
 COMPANY / ORGANIZATION

7804 Pan American Fwy - NE, Ste. 5
 ADDRESS Albuquerque, NM 87109

505-205-4819 mschluep@alliantenv.com
 PHONE EMAIL

STATEMENT DETAILS

ADDRESS THE STATEMENT TO: SAME AS APPLICANT

 NAME

 COMPANY / ORGANIZATION

 ADDRESS

 PHONE FAX EMAIL

FOR STAFF USE ONLY

DATE RECEIVED: 12/19/2023

RECEIVED BY: F. MONTANO

ZAP: _____

ZONE: NR-SU

Planning & Development Services Department

415 Silver Ave. SW, 2nd Floor
Albuquerque, New Mexico 87102
Office: (505) 314-0350
Fax: (505) 314-0480
www.bernco.gov



January 18, 2024

BODE AERO SERVICES INC
PO BOX 19006
ALBUQUERQUE, NM 87119-0006

Re: 7401 Atrisco Vista – the “property” – ZNP2023-0002

To Whom It May Concern:

This letter shall certify that according to the official map on file with this office as of this date, the referenced property, legally described as D1A1, AEROSPACE TECHNOLOGY PARK, Albuquerque, Bernalillo County, New Mexico, is not within the unincorporated area of Bernalillo County. The parcel is within the boundary of the City of Albuquerque.

Do not hesitate to contact me if you have questions concerning this matter at 314-0499 or at mgould@bernco.gov.

Sincerely,

A handwritten signature in black ink, appearing to read "Maggie Gould".

Maggie Gould
Zoning Administrator

Enclosures:

CC: mschluep@alliantenv.com

County Commissioners

Barbara Baca, Chair, District 1 • Adriann Barboa, Vice-Chair, District 3
Steven Michael Quezada, District 2 • Walt Benson, District 4 • Eric C. Olivas, District 5

Elected Officials

Damian R. Lara, Assessor • Linda Stover, Clerk • Cristy J. Carbón-Gaul, Probate Judge
John D. Allen, Sheriff • Nancy M. Bearce, Treasurer

County Manager

Julie Morgas Baca



**City of Albuquerque
Environmental Health Department
Air Quality Program**



Permit Application Review Fee Instructions

All source registration and construction permit applications for stationary or portable sources shall be charged an application review fee according to the fee schedule in 20.11.2 NMAC. These filing fees are required for both new construction, reconstruction, and permit modification applications. Qualified small businesses as defined in 20.11.2 NMAC may be eligible to pay one-half of the application review fees and 100% of all applicable federal program review fees.

Please fill out the permit application review fee checklist and submit with a check or money order payable to the "City of Albuquerque Fund 242" and either:

1. deliver it in person to the Albuquerque Environmental Health Department, 3rd floor, Suite 3023, Albuquerque-Bernalillo County Government Center, south building, One Civic Plaza NW, Albuquerque, NM or,
2. mail it to Albuquerque Environmental Health Department, Air Quality Program, Permitting Division, P.O. Box 1293, Albuquerque, NM 87103.
3. online fee payments are now accepted as well. Application must be submitted first, then Department will provide invoice for online payment.

The Department will provide a receipt of payment to the applicant. The person delivering or filing a submittal shall attach a copy of the receipt of payment to the submittal as proof of payment. Application review fees shall not be refunded without the written approval of the manager. If a refund is requested, a reasonable professional service fee to cover the costs of staff time involved in processing such requests shall be assessed. Please refer to 20.11.2 NMAC (effective January 10, 2011) for more detail concerning the "Fees" regulation as this checklist does not relieve the applicant from any applicable requirement of the regulation.



**City of Albuquerque
Environmental Health Department
Air Quality Program**



Permit Application Review Fee Checklist Effective January 1, 2024 – December 31, 2024

Please completely fill out the information in each section. Incompleteness of this checklist may result in the Albuquerque Environmental Health Department not accepting the application review fees. If you should have any questions concerning this checklist, please call 768-1972.

I. COMPANY INFORMATION:

Company Name	Albuquerque Bernalillo County Water Utility Authority		
Company Address	P.O. Box 568, Albuquerque, NM		
Facility Name	Albuquerque Bernalillo County Water Utility Authority		
Facility Address	7401 Paseo del Volcan NW		
Contact Person	Kelli Berman, PE		
Contact Person Phone Number	(505) 803-4601		
Are these application review fees for an existing permitted source located within the City of Albuquerque or Bernalillo County?	Yes <input checked="" type="checkbox"/>	No <input type="checkbox"/>	
If yes, what is the permit number associated with this modification?	Permit # 1737		
Is this application review fee for a Qualified Small Business as defined in 20.11.2 NMAC? (See Definition of Qualified Small Business on Page 4)	Yes <input type="checkbox"/>	No <input checked="" type="checkbox"/>	

II. STATIONARY SOURCE APPLICATION REVIEW FEES:

If the application is for a new stationary source facility, please check all that apply. If this application is for a modification to an existing permit please see Section III.

Check All That Apply	Stationary Sources	Review Fee	Program Element
Air Quality Notifications			
<input type="checkbox"/>	AQN New Application	\$680.00	2801
<input type="checkbox"/>	AQN Technical Amendment	\$371.00	2802
<input type="checkbox"/>	AQN Transfer of a Prior Authorization	\$371.00	2803
<input checked="" type="checkbox"/>	<i>Not Applicable</i>	<i>See Sections Below</i>	
Stationary Source Review Fees (Not Based on Proposed Allowable Emission Rate)			
<input type="checkbox"/>	Source Registration required by 20.11.40 NMAC	\$693.00	2401
<input type="checkbox"/>	A Stationary Source that requires a permit pursuant to 20.11.41 NMAC or other board regulations and are not subject to the below proposed allowable emission rates	\$1,385.00	2301
<input checked="" type="checkbox"/>	<i>Not Applicable</i>	<i>See Sections Below</i>	
Stationary Source Review Fees (Based on the Proposed Allowable Emission Rate for the single highest fee pollutant)			
<input type="checkbox"/>	Proposed Allowable Emission Rate Equal to or greater than 1 tpy and less than 5 tpy	\$1,039.00	2302
<input type="checkbox"/>	Proposed Allowable Emission Rate Equal to or greater than 5 tpy and less than 25 tpy	\$2,078.00	2303
<input type="checkbox"/>	Proposed Allowable Emission Rate Equal to or greater than 25 tpy and less than 50 tpy	\$4,156.00	2304
<input type="checkbox"/>	Proposed Allowable Emission Rate Equal to or greater than 50 tpy and less than 75 tpy	\$6,324.00	2305
<input type="checkbox"/>	Proposed Allowable Emission Rate Equal to or greater than 75 tpy and less than 100 tpy	\$8,312.00	2306
<input type="checkbox"/>	Proposed Allowable Emission Rate Equal to or greater than 100 tpy	\$10,390.00	2307
<input checked="" type="checkbox"/>	<i>Not Applicable</i>	<i>See Sections Below</i>	

Federal Program Review Fees for each subpart (In addition to the Stationary Source Application Review Fees above)			
<input type="checkbox"/>	40 CFR 60 – “New Source Performance Standards” (NSPS)	\$1,385.00	2308
<input type="checkbox"/>	40 CFR 61 – “Emission Standards for Hazardous Air Pollutants (NESHAPs)	\$1,385.00	2309
<input type="checkbox"/>	40 CFR 63 – (NESHAPs) Promulgated Standards	\$1,385.00	2310
<input type="checkbox"/>	40 CFR 63 – (NESHAPs) Case-by-Case MACT Review	\$13,854.00	2311
<input type="checkbox"/>	20.11.61 NMAC – Prevention of Significant Deterioration (PSD) Permit	\$6,927.00	2312
<input type="checkbox"/>	20.11.60 NMAC – Non-Attainment Area Permit	\$6,927.00	2313
<input checked="" type="checkbox"/>	<i>Not Applicable</i>	<i>Not Applicable</i>	

III. MODIFICATION TO EXISTING PERMIT APPLICATION REVIEW FEES:

If the permit application is for a modification to an existing permit, please check all that apply. If this application is for a new stationary source facility, please see Section II.

Check All That Apply	Modifications	Review Fee	Program Element
Modification Application Review Fees (Not Based on Proposed Allowable Emission Rate)			
<input checked="" type="checkbox"/>	Proposed modification to an existing stationary source that requires a permit pursuant to 20.11.41 NMAC or other board regulations and are not subject to the below proposed allowable emission rates	\$1,385	2321
<input type="checkbox"/>	<i>Not Applicable</i>	<i>See Sections Below</i>	
Modification Application Review Fees (Based on the Proposed Allowable Emission Rate for the single highest fee pollutant)			
<input type="checkbox"/>	Proposed Allowable Emission Rate Equal to or greater than 1 tpy and less than 5 tpy	\$1,039.00	2322
<input type="checkbox"/>	Proposed Allowable Emission Rate Equal to or greater than 5 tpy and less than 25 tpy	\$2,078.00	2323
<input type="checkbox"/>	Proposed Allowable Emission Rate Equal to or greater than 25 tpy and less than 50 tpy	\$4,156.00	2324
<input type="checkbox"/>	Proposed Allowable Emission Rate Equal to or greater than 50 tpy and less than 75 tpy	\$6,234.00	2325
<input type="checkbox"/>	Proposed Allowable Emission Rate Equal to or greater than 75 tpy and less than 100 tpy	\$8,312.00	2326
<input type="checkbox"/>	Proposed Allowable Emission Rate Equal to or greater than 100 tpy	\$10,390.00	2327
<input checked="" type="checkbox"/>	<i>Not Applicable</i>	<i>See Sections Below</i>	
Major Modifications Review Fees (In addition to the Modification Application Review Fees above)			
<input type="checkbox"/>	20.11.60 NMAC – Permitting in Non-Attainment Areas	\$6,927.00	2333
<input type="checkbox"/>	20.11.61 NMAC – Prevention of Significant Deterioration	\$6,927.00	2334
<input checked="" type="checkbox"/>	<i>Not Applicable</i>	<i>Not Applicable</i>	
Federal Program Review Fees for each subpart (This section applies only if a Federal Program Review is triggered by the proposed modification) (These fees are in addition to the Modification and Major Modification Application Review Fees above)			
<input type="checkbox"/>	40 CFR 60 – “New Source Performance Standards” (NSPS)	\$1,385.00	2328
<input type="checkbox"/>	40 CFR 61 – “Emission Standards for Hazardous Air Pollutants (NESHAPs)	\$1,385.00	2329
<input type="checkbox"/>	40 CFR 63 – (NESHAPs) Promulgated Standards	\$1,385.00	2330
<input type="checkbox"/>	40 CFR 63 – (NESHAPs) Case-by-Case MACT Review	\$13,854.00	2331
<input type="checkbox"/>	20.11.61 NMAC – Prevention of Significant Deterioration (PSD) Permit	\$6,927.00	2332
<input type="checkbox"/>	20.11.60 NMAC – Non-Attainment Area Permit	\$6,927.00	2333
<input checked="" type="checkbox"/>	<i>Not Applicable</i>	<i>Not Applicable</i>	

IV. ADMINISTRATIVE AND TECHNICAL REVISION APPLICATION REVIEW FEES:

If the permit application is for an administrative or technical revision of an existing permit issued pursuant to 20.11.41 NMAC, please check one that applies.

Check One	Revision Type	Review Fee	Program Element
<input type="checkbox"/>	Administrative Revisions	\$250.00	2340
<input type="checkbox"/>	Technical Revisions	\$500.00	2341
<input checked="" type="checkbox"/>	Not Applicable	See Sections II, III or V	

V. PORTABLE STATIONARY SOURCE RELOCATION FEES:

If the permit application is for a portable stationary source relocation of an existing permit, please check one that applies.

Check One	Portable Stationary Source Relocation Type	Review Fee	Program Element
<input type="checkbox"/>	No New Air Dispersion Modeling Required	\$500.00	2501
<input type="checkbox"/>	New Air Dispersion Modeling Required	\$750.00	2502
<input checked="" type="checkbox"/>	Not Applicable	See Sections II, III or IV	

VI. Please submit payment in the amount shown for the total application review fee.

Section Totals	Review Fee Amount
Section II Total	\$0
Section III Total	\$1385.00
Section IV Total	\$0
Section V Total	\$0
Total Application Review Fee	\$1385.00

I, the undersigned, a responsible official of the applicant company, certify that to the best of my knowledge, the information stated on this checklist, give a true and complete representation of the permit application review fees which are being submitted. I also understand that an incorrect submittal of permit application reviews may cause an incompleteness determination of the submitted permit application and that the balance of the appropriate permit application review fees shall be paid in full prior to further processing of the application.

Signed this 6th day of February, 20 24

Mark S. Sanchez
Print Name

Executive Director
Print Title


Signature

Definition of Qualified Small Business as defined in 20.11.2 NMAC:

“Qualified small business” means a business that meets all of the following requirements:

- (1) a business that has 100 or fewer employees;
- (2) a small business concern as defined by the federal Small Business Act;
- (3) a source that emits less than 50 tons per year of any individual regulated air pollutant, or less than 75 tons per year of all regulated air pollutants combined; and
- (4) a source that is not a major source or major stationary source.

Note: Beginning January 1, 2011, and every January 1 thereafter, an increase based on the consumer price index shall be added to the application review fees. The application review fees established in Subsection A through D of 20.11.2.18 NMAC shall be adjusted by an amount equal to the increase in the consumer price index for the immediately-preceding year. Application review fee adjustments equal to or greater than fifty cents (\$0.50) shall be rounded up to the next highest whole dollar. Application review fee adjustments totaling less than fifty cents (\$0.50) shall be rounded down to the next lowest whole dollar. The department shall post the application review fees on the city of Albuquerque environmental health department air quality program website.

APPENDIX C
Proof of Public Notice



Timothy M. Keller,
Mayor

Public Participation

List of Neighborhood Associations and Neighborhood Coalitions MEMORANDUM

To: Kelli Berman, PE
From: Angela Lopez, Environmental Health-Air Quality Permitting Manager
Subject: Determination of Neighborhood Associations and Coalitions
within 0.5 mile of 7401 Paseo Del Volcan NW in Bernalillo County, NM.
Date: January 11, 2024

DETERMINATION:

On January 11, 2024, I used the City of Albuquerque Zoning Advanced Map Viewer (<http://coagisweb.cabq.gov/>) to verify which City of Albuquerque Neighborhood Associations (NA), Homeowner Associations (HOA) and Neighborhood Coalitions (NC) are located within 0.5 mile of 7401 Paseo Del Volcan NW Bernalillo County, NM.

I then used the City of Albuquerque Office (COA) of Neighborhood Coordination's Monthly Master NA List dated January 2024 and the Bernalillo County (BC) Monthly Neighborhood Association January 2024 Excel file to determine the contact information for each NA and NC located within 0.5 mile of 7401 Paseo Del Volcan NW in Bernalillo County, NM.

The table below contains the contact information, which will be used in the City of Albuquerque Environmental Health Department's public notice. Duplicates have been deleted.

COA/BC Association or Coalition	Name	Email or Mailing Address*
Westside Coalition of Neighborhood Associations	Rene Horvath	aboard111@gmail.com
	Elizabeth Haley	elizabethkayhaley@gmail.com
		wscona0@gmail.com

**If email address is not listed, provide public notice via certified mail and include a copy of each mail receipt with the application submittal.*

SUBJECT: Public Notice of Proposed Air Quality Construction Permit Application

Dear Neighborhood Association/Coalition Representative(s),

Why did I receive this public notice?

You are receiving this notice in accordance with New Mexico Administrative Code (NMAC) 20.11.41.13.B(1) which requires any applicant seeking an Air Quality Construction Permit pursuant to 20.11.41 NMAC to provide public notice by certified mail or electronic mail to the designated representative(s) of the recognized neighborhood associations and recognized coalitions that are within one-half mile of the exterior boundaries of the property on which the source is or is proposed to be located.

What is the Air Quality Permit application review process?

The City of Albuquerque, Environmental Health Department, Air Quality Program (Program) is responsible for the review and issuance of Air Quality Permits for any stationary source of air contaminants within Bernalillo County. Once the application is received, the Program reviews each application and rules it either complete or incomplete. Complete applications will then go through a 30-day public comment period. Within 90 days after the Program has ruled the application complete, the Program shall issue the permit, issue the permit subject to conditions, or deny the requested permit or permit modification. The Program shall hold a Public Information Hearing pursuant to 20.11.41.15 NMAC if the Director determines there is significant public interest and a significant air quality issue is involved.

What do I need to know about this proposed application?

Applicant Name	Albuquerque Bernalillo County Water Utility Authority
Site or Facility Name	Albuquerque Bernalillo County Water Utility Authority
Site or Facility Address	7401 Paseo del Volcan NW, Albuquerque, NM 87121
New or Existing Source	EXISTING
Anticipated Date of Application Submittal	January 30, 2024
Summary of Proposed Source to Be Permitted	This revision application is to revise the existing Construction Permit No. 1737. The permitted capacities of two emergency engines is to be increased from from 150 horse power (hp) to 166 hp. These generator engines were permitted in 2004 for back-up power in the event of utility power loss.

What emission limits and operating schedule are being requested?

See attached Notice of Intent to Construct form for this information.

How do I get additional information regarding this proposed application?

For inquiries regarding the proposed source, contact:

- Kelli Berman, P.E.
- kberman@abcwua.org
- (505) 803-4601

For inquiries regarding the air quality permitting process, contact:

- City of Albuquerque Environmental Health Department Air Quality Program
- aqd@cabq.gov
- (505) 768-1972

Public Notice of Proposed Air Quality Construction Permit Application

Martin Schluep <mschluep@alliantenv.com>

Fri 1/19/2024 2:25 PM

To:aboard111@gmail.com <aboard111@gmail.com>;elizabethkayhaley@gmail.com <elizabethkayhaley@gmail.com>; wscona0@gmail.com <wscona0@gmail.com>
Cc:Shuryn, Danielle <dshuryn@abcwua.org>;Berman, Kelli O. <kberman@abcwua.org>;Lopez, Angela <angelalopez@cabq.gov>

📎 1 attachments (134 KB)
Notice of Intent 02082023.pdf;

Dear Neighborhood Association/Coalition Representative(s),

Why did I receive this public notice?

You are receiving this notice in accordance with New Mexico Administrative Code (NMAC) 20.11.41.13.B(1) which requires any applicant seeking an Air Quality Construction Permit pursuant to 20.11.41 NMAC to provide public notice by certified mail or electronic mail to the designated representative(s) of the recognized neighborhood associations and recognized coalitions that are within one-half mile of the exterior boundaries of the property on which the source is or is proposed to be located.

What is the Air Quality Permit application review process?

The City of Albuquerque, Environmental Health Department, Air Quality Program (Program) is responsible for the review and issuance of Air Quality Permits for any stationary source of air contaminants within Bernalillo County. Once the application is received, the Program reviews each application and rules it either complete or incomplete. Complete applications will then go through a 30-day public comment period. Within 90 days after the Program has ruled the application complete, the Program shall issue the permit, issue the permit subject to conditions, or deny the requested permit or permit modification. The Program shall hold a Public Information Hearing pursuant to 20.11.41.15 NMAC if the Director determines there is significant public interest and a significant air quality issue is involved.

What do I need to know about this proposed application?

Applicant Name	Albuquerque Bernalillo County Water Utility Authority
Site or Facility Name	Albuquerque Bernalillo County Water Utility Authority
Site or Facility Address	7401 Paseo del Volcan NW, Albuquerque, NM 87121
New or Existing Source	EXISTING
Anticipated Date of Application Submittal	January 30, 2024
Summary of Proposed Source to Be Permitted	This revision application is to revise the existing Construction Permit No. 1737. The permitted capacities of two emergency engines is to be increased from from 150 horse power (hp) to 166 hp. These generator engines were permitted in 2004 for back-up power in the event of utility power loss.

What emission limits and operating schedule are being requested?

See attached Notice of Intent to Construct form for this information.

How do I get additional information regarding this proposed application?

For inquiries regarding the proposed source, contact:

- Kelli Berman, P.E.
- kberman@abcwua.org
- (505) 803-4601

For inquiries regarding the air quality permitting process, contact:

- City of Albuquerque Environmental Health Department Air Quality Program
- aqd@cabq.gov
- (505) 768-1972

Martin R. Schluep

Alliant Environmental, LLC

7804 Pan American Fwy. NE, Suite 5

Albuquerque, NM 87109

(C) 505.205.4819

www.alliantenv.com

NOTICE FROM THE APPLICANT

Notice of Intent to Apply for Air Quality Construction Permit

You are receiving this notice because the New Mexico Air Quality Control Act (20.11.41.13B NMAC) requires any owner/operator proposing to construct or modify a facility subject to air quality regulations to provide public notice by certified mail or electronic mail to designated representatives of recognized neighborhood associations and coalitions within 0.5-mile of the property on which the source is or is proposed to be located.

This notice indicates that the owner/operator intends to apply for an Air Quality Construction Permit from the Albuquerque – Bernalillo County Joint Air Quality Program. Currently, no application for this proposed project has been submitted to the Air Quality Program. Applicants are required to include a copy of this form and documentation of mailed notices with their Air Quality Construction Permit Application.

Proposed Project Information

**Applicant's name
and address:**

*Nombre y domicilio del
solicitante:*

Albuquerque Bernalillo County Water Utility Authority (ABCWUA)

**Owner / operator's
name and address:**

*Nombre y domicilio del
propietario u operador:*

ABCWUA, P.O. Box 568, Albuquerque, NM 87103

Contact for comments and inquires:

Datos actuales para comentarios y preguntas:

Name (*Nombre*): Kelli Berman, PE

Address (*Domicilio*): P.O. Box 568, Albuquerque, NM 87103

Phone Number (*Número Telefónico*): (505) 803-4601

E-mail Address (*Correo Electrónico*): kberman@abcwua.org

Actual or estimated date the application will be submitted to the department:

Fecha actual o estimada en que se entregará la solicitud al departamento: January 30, 2024

Description of the source:

Descripción de la fuente: Two 166 horse power (hp) diesel powered emergency generator engines

**Exact location of the source
or proposed source:**

*Ubicación exacta de la fuente o
fuente propuesta:*

7401 Paseo del Volcan NW, Albuquerque, NM 87121

Nature of business:

Tipo de negocio:

Wastewater treatment

**Process or change for which the
permit is requested:**

*Proceso o cambio para el cuál de solicita el
permiso:*

Revise both emergency engines' capacities from 150 hp to 166 hp

Maximum operating schedule:

Horario máximo de operaciones:

500 hours per year

Normal operating schedule:

Horario normal de operaciones:

Weekly emergency engine testing (approximately 1 hour per engine)

Preliminary estimate of the maximum quantities of each regulated air contaminant the source will emit:
Estimación preliminar de las cantidades máximas de cada contaminante de aire regulado que la fuente va a emitir:

Air Contaminant <i>Contaminante de aire</i>	Proposed Construction Permit <i>Permiso de Construcción Propuesto</i>		Net Changes <i>(for permit modification or technical revision)</i> <i>Cambio Neto de Emisiones</i> <i>(para modificación de permiso o revisión técnica)</i>	
	pounds per hour <i>libras por hora</i>	tons per year <i>toneladas por año</i>	pounds per hour <i>libras por hora</i>	tons per year <i>toneladas por año</i>
NO_x	10.29	2.57	0.89	0.17
CO	2.22	0.55	0.22	-0.05
VOC	0.82	0.21	0.02	0.01
SO₂	0.68	0.17	0.08	-0.03
PM₁₀	0.73	0.18	0.13	-0.02
PM_{2.5}	0.73	0.18	0.13	-0.02
HAP	0.02	0.02	0.02	0.02

NOTE: To add extra rows for H₂S or Pb in Word, click in a box in the last row. Click the plus (+) sign that appears on the right of the row to add a row.

Questions or comments regarding this Notice of Intent should be directed to the Applicant. Contact information is provided with the Proposed Project Information on the first page of this notice. To check the status of an Air Quality Construction Permit application, call 311 and provide the Applicant’s information, or visit www.cabq.gov/airquality/air-quality-permits.

The Air Quality Program will issue a Public Notice announcing a 30-day public comment period on the permit application for the proposed project when the application is deemed complete. The Air Quality Program does not process or issue notices on applications that are deemed incomplete. More information about the air quality permitting process is attached to this notice.

Air Quality Construction Permitting Overview

This is the typical process to obtain an Air Quality Construction Permit for Synthetic Minor and Minor sources of air pollution from the Albuquerque – Bernalillo County Joint Air Quality Program.

Step 1: Pre-application Meeting: The Applicant and their consultant must request a meeting with the Air Quality Program to discuss the proposed action. If air dispersion modeling is required, Air Quality Program staff discuss the modeling protocol with the Applicant to ensure that all proposed emissions are considered.

Notice of Intent from the Applicant: Before submitting their application, the Applicant is required to notify all nearby neighborhood associations and interested parties that they intend to apply for an air quality permit or modify an existing permit. The Applicant is also required to post a notice sign at the facility location.

Step 2: Administrative Completeness Review and Preliminary Technical Review: The Air Quality Program has 30 days from the day the permit is received to review the permit application to be sure that it is administratively complete. This means that all application forms must be signed and filled out properly, and that all relevant technical information needed to evaluate any proposed impacts is included. If the application is not complete, the permit reviewer will return the application and request more information from the Applicant. Applicants have three opportunities to submit an administratively complete application with all relevant technical information.

Public Notice from the Department: When the application is deemed complete, the Department will issue a Public Notice announcing a 30-day public comment period on the permit application. This notice is distributed to the same nearby neighborhood associations and interested parties that the Applicant sent notices to, and published on the Air Quality Program's website.

During this 30-day comment period, individuals have the opportunity to submit written comments expressing their concerns or support for the proposed project, and/or to request a Public Information Hearing. If approved by the Environmental Health Department Director, Public Information Hearings are held after the technical analysis is complete and the permit has been drafted.

Step 3: Technical Analysis and Draft Permit: Air Quality Program staff review all elements of the proposed operation related to air quality, and review outputs from advanced air dispersion modeling software that considers existing emission levels in the area surrounding the proposed project, emission levels from the proposed project, and meteorological data. The total calculated level of emissions is compared to state and federal air quality standards and informs the decision on whether to approve or deny the Applicant's permit.

Draft Permit: The permit will establish emission limits, standards, monitoring, recordkeeping, and reporting requirements. The draft permit undergoes an internal peer review process to determine if the emissions were properly evaluated, permit limits are appropriate and enforceable, and the permit is clear, concise, and consistent.

Public Notice from the Department: When the technical analysis is complete and the permit has been drafted, the Department will issue a second Public Notice announcing a 30-day public comment period on the technical analysis and draft permit. This second Public Notice, along with the technical analysis documentation and draft permit, will be published on the Air Quality Program's website, and the public notice for availability of the technical analysis and draft permit will only be directly sent to those who requested further information during the first comment period.

Air Quality Construction Permitting Overview

During this second 30-day comment period, residents have another opportunity to submit written comments expressing their concerns or support for the proposed project, and/or to request a Public Information Hearing.

Possible Public Information Hearing: The Environmental Health Department Director may decide to hold a Public Information Hearing for a permit application if there is significant public interest and a significant air quality issue. If a Public Information Hearing is held, it will occur after the technical analysis is complete and the permit has been drafted.

Step 4: Public Comment Evaluation and Response: The Air Quality Program evaluates all public comments received during the two 30-day public comment periods and Public Information Hearing, if held, and updates the technical analysis and draft permit as appropriate. The Air Quality Program prepares a response document to address the public comments received, and when a final decision is made on the permit application, the comment response document is published on the Air Quality Program's website and distributed to the individuals who participated in the permit process. If no comments are received, a response document is not prepared.

Step 5: Final Decision on the Application: After public comments are addressed and the final technical review is completed, the Environmental Health Department makes a final decision on the application. If the permit application meets all applicable requirements set forth by the New Mexico Air Quality Control Act and the federal Clean Air Act, the permit is approved. If the permit application does not meet all applicable requirements, it is denied.

Notifications of the final decision on the permit application and the availability of the comment response document is published on the Air Quality Program's website and distributed to the individuals who participated in the permit process.

The Department must approve a permit application if the proposed action will meet all applicable requirements and if it demonstrates that it will not result in an exceedance of ambient air quality standards. Permit writers are very careful to ensure that estimated emissions have been appropriately identified or quantified and that the emission data used are acceptable.

The Department must deny a permit application if it is deemed incomplete three times, if the proposed action will not meet applicable requirements, if estimated emissions have not been appropriately identified or quantified, or if the emission data are not acceptable for technical reasons.

For more information about air quality permitting, visit www.cabq.gov/airquality/air-quality-permits



**City of Albuquerque
Environmental Health Department
Air Quality Program**



Permit Application Review Fee Instructions

All source registration and construction permit applications for stationary or portable sources shall be charged an application review fee according to the fee schedule in 20.11.2 NMAC. These filing fees are required for both new construction, reconstruction, and permit modification applications. Qualified small businesses as defined in 20.11.2 NMAC may be eligible to pay one-half of the application review fees and 100% of all applicable federal program review fees.

Please fill out the permit application review fee checklist and submit with a check or money order payable to the "City of Albuquerque Fund 242" and either:

1. deliver it in person to the Albuquerque Environmental Health Department, 3rd floor, Suite 3023, Albuquerque-Bernalillo County Government Center, south building, One Civic Plaza NW, Albuquerque, NM or,
2. mail it to Albuquerque Environmental Health Department, Air Quality Program, Permitting Division, P.O. Box 1293, Albuquerque, NM 87103.
3. online fee payments are now accepted as well. Application must be submitted first, then Department will provide invoice for online payment.

The Department will provide a receipt of payment to the applicant. The person delivering or filing a submittal shall attach a copy of the receipt of payment to the submittal as proof of payment. Application review fees shall not be refunded without the written approval of the manager. If a refund is requested, a reasonable professional service fee to cover the costs of staff time involved in processing such requests shall be assessed. Please refer to 20.11.2 NMAC (effective January 10, 2011) for more detail concerning the "Fees" regulation as this checklist does not relieve the applicant from any applicable requirement of the regulation.